



Expertise
and insight
for the future

Gurwinder Singh Sahota

Real-Time Parking Solutions for Smart Cities

Metropolia University of Applied Sciences

Master of Engineering

Information Technology

Master's Thesis

1 February 2021

PREFACE

The reason for this examination initially originated from my energy for growing better strategies for stopping portion. As the world moves further into the advanced age, producing immense measures of information and conceived computerized content, there will be a more noteworthy need to get to inheritance materials made with obsolete innovation. How might we access this substance? It is my obsession to discover as well as to build up a model to separate obstructions of availability for people in the future.

In truth, I could not have achieved my current level of success without a strong support group. First of all, my parents, who supported me with love and understanding. And secondly, my committee members, each of whom has provided patient advice and guidance throughout the research process. Thank you all for your unwavering support.

Location: Helsinki

Date: 30th January, 2021

Gurwinder Singh Sahota

Author Title	Gurwinder Singh Sahota Real-Time Parking solutions for Smart Cities.
Number of Pages Date	Thirty Seven Pages 10 October 2020
Degree	Master of Engineering
Degree Programme	Information Technology
Instructor(s)	Ville Jääskeläinen, Principal Lecturer
<p>Considering the ascent of metropolitan populace and gridlock in urban communities these days, savvy stopping is a major worry to deal with. In the examination field as well as, savvy urban communities are worried about practical turn of events and an elevated expectation of life by dominating in different zones, for example, portability, eco-accommodating climate, individuals' simplicity of living, and even administrative just as private organizations.</p> <p>Though, a parking management system provides support and help to find out the optimal parking slots as per their expectations. Current smart parking systems introduce centralized parking solutions through which the drivers can communicate directly to a central server and retrieve the needed information from there. This way the drivers can be able to interact with the system directly and exchange the information as fast as they can. Additionally, on account of the advancement of correspondence innovations, drivers can all the more effectively find fulfilling parking spots with the assistance of stopping administrations.</p> <p>Besides, the current and continuous chips away at shrewd stopping are confounded and transdisciplinary. While conveying a shrewd stopping framework, urban areas, just as metropolitan ability, need to spend quite a while to overview and review all the possibilities or conceivable outcomes. In addition, numerous discrete works include different orders, that are firmly connected and indistinguishable.</p> <p>In a nutshell, this thesis introduces the main sensor technologies used to detect the status of a parking lot and various existing smart parking solutions. This thesis includes a literature survey for 2000-2018 parking solutions as they were implied to smart parking development and evolution. The thesis also provides technical information regarding parking information status that can share crucial information between wireless sensors as well as IoT devices and different parking systems.</p>	
Keywords	Smart Parking, Sensors, Internet of Things, RFID, GPS

Contents

Preface

Abstract

List of Figures (Tables)

List of Abbreviations

1	Introduction	1
2	Sensors Used in Smart Parking	4
2.1	Camera	4
2.2	Passive Infrared Sensor	5
2.3	Active Infrared Sensor	6
2.4	Ultrasonic Sensor	7
2.5	Cellular Sensors	8
2.7	Inductive Loop Detectors	10
2.8	Global Positioning System (GPS)	11
2.9	Galileo Satellite Navigation System	12
3	Existing Smart Parking Solutions	15
3.1	Parking System	15
3.1.1	On-Street Parking	155
3.1.2	Off-Street Parking	188
3.2	Parking Statistics	188
3.3	Sensor-Based Smart Parking Implementation	19
3.4	Image Processing Based Intelligent Parking System	245
3.5	Deep Learning based smart parking solution using LSTM5	27
4	Next-Generation Smart Parking Solutions	33
5	Conclusion	35

References

List of Figures

Figure 1. Passive Infrared Sensor Working	6
Figure 2. Active Infrared Sensor Working	7
Figure 3. Ultrasonic Sensor Working	8
Figure 4. Cellular Sensor Working	9
Figure 5. Magnetometer Sensor	10
Figure 6. Inductive Loop Detectors Working	11
Figure 7. Global Positioning System	12
Figure 8. Galileo Satellite Navigation System	13
Figure 9. Magnetometer Sensor	14
Figure 10. parallel parking	15
Figure 11. 30° parking	16
Figure 12. 45° parking	17
Figure 13. 60° parking	17
Figure 14. 90° parking	18
Figure 15. off-street parking	18
Figure 16. Smart Parking Overview based on Sensors	20
Figure 17. Installed sensors	21
Figure 18. Whole month Parking Occupancy	23
Figure 19. Normal parking occupancy in a day of indoor parking	24
Figure 20. System Flow	25
Figure 21. Image Captured from Camera	25
Figure 22. Segmentation Process of Image	26
Figure 23. Segmentation of Binary Image	26
Figure 24. System architecture	27
Figure 25. Model Building Workflow	30
Figure 26. Data Structure of Preprocessed Dataset	31
Figure 27. Economical Workflow Based on ECS.	31
Figure 28. Examination between the Predicted Series of LSTM and BP	33

List of Abbreviations

API	An application programming interface is a registering interface that characterizes cooperation's between numerous product go-betweens.
BP	In AI, back spread is a broadly utilized calculation for preparing feed forward neural organizations.
CSV	A comma-isolated qualities document is a delimited book record that utilizes a comma to isolate values.
GIS	A huge number of associations in for all intents and purposes each field are utilizing GIS to make maps that impart, perform investigation, share data, and take care of complex issues around the planet.
GPS	GPS is a global navigation satellite system that provides location, velocity, and time synchronization.
HTTP	is an application layer convention for conveyed, community, hypermedia data frameworks.
ICT	Data and interchanges innovation (ICT) is an extensional term for data innovation (IT) that burdens the part of brought together communications[1] and the mix of broadcast communications (phone lines and remote signs) and PCs, just as important venture programming, middleware, stockpiling, and varying media frameworks, that empower clients to get to, store, send, and control data.
I2V	is a communication framework that enables share information by supporting the highway system and devices.
IoT	The Internet of things (IoT) portrays the organization of actual items—"things"— that are installed with sensors, programming, and different advancements to interface and trade information with different gadgets and frameworks over the Internet.
IR	Infrared, now and again called infrared light, is electromagnetic radiation with frequencies longer than those of noticeable light.
IRC	The Indian Roads Congress (IRC) is the Apex Body of Highway Engineers in the country.
ITS	A savvy transportation framework is a high level application that plans to offer imaginative types of assistance identifying with various methods of transport and traffic the executives and empower clients to be better educated and make more secure, more planned, and 'more astute' utilization of transport organizations

JSON	JSON is an open standard record arrangement, and information exchange design, that utilizes comprehensible content to store and communicate information objects comprising of characteristic worth combines and exhibit information types.
LORA	LORA is a low-power wide-region network convention created by Semtech. It depends on spread range balance procedures got from twitter spread range innovation.
LPWAN	is a kind of remote media transmission wide region network intended to long-run interchanges at a low cycle rate among things, for example, sensors worked on a battery.
LSTM	Long momentary memory is a counterfeit repetitive neural organization design utilized in the field of profound learning.
M2M	Machine to a machine is immediate correspondence between gadgets utilizing any interchanges channel, including wired and remote.
MSE	MSE of an assessor (of a technique for assessing an imperceptibly amount) quantifies the normal of the squares of the mistakes—that is, the normal squared distinction between the assessed values and the genuine worth.
PDA	An individual advanced associate, otherwise called a handheld PC, is an assortment of cell phone what capacities as an individual data supervisor.
QR	It is the trademark or a type of 2D bar code that contains a matrix of dots.
RFID	Radio-recurrence distinguishing proof utilizes electromagnetic fields to consequently recognize and follow labels connected to objects.
V2I	is a correspondence structure that empowers a few vehicles to impart data to an assortment of gadgets supporting the expressway arrangement of a specific country.
Wi-Fi	It permits an electronic gadget to move information or associate with the web utilizing ISM radio groups.

1 Introduction

Parking coordinates land use and transportation in urban areas, and it is one of the most important domains when planning better city environments. A savvy city is characterized as a metropolitan zone that utilizes diverse electronic strategies and sensors to gather information distantly. Likewise, the savvy city idea coordinates data and correspondence innovation, and different actual gadgets associated with the IoT organization to upgrade the general activities of a specific brilliant city. Smart Cities play a major role in economic growth, nowadays more than 31% world's population lives in urban areas and contribute more than 50% of the GDP of the counties. Besides, their objectives to coordinate ICT answers for improve the personal satisfaction of its residents and their communications with government specialists or authorities assume a significant part.

Hence, traffic and urban mobility are some of the major issues for urban infrastructure development. Notwithstanding, they face numerous difficulties of manageable stopping parking occupancy zones with regards to expanding interest for parking spots and the restricted limit of the city's vehicle, traffic, and leaving frameworks. Furthermore, smart cities need to provide customized information to their inhabitants via enhanced mobile applications. The metropolitan portability in brilliant urban communities features a few issues that are depended on supportable improvement of those: expects to make individuals' life more alluring, more practical, and in any event, fortifying social connections or associations.

The rise in urban population is surging by the increasing number of personal journeys compared to the often uncertain public transport and the increasing growth of urban mobility is causing an increasing number of automobiles to generate traffic congestions. Thus, it directly affects the driver's capability to predict how much time they need to spend to find available parking lots. According to the survey of 2015, 30% of traffic congestions are caused by vehicles in search of free parking lots in the cities [6]. In this context, knowing in advance the available parking spaces would overcome the problem and reduce traffic congestions.

Besides, cities deploy smart parking services on an economic initiative basis. To start with, drivers can abbreviate their stopping search time, diminish ecological contamination, decrease costs with less fuel utilization, and reduce gridlocks through data from keen stopping applications. Furthermore, drivers can quickly discover a parking spot, the inactive time for on-road stopping is more limited and the stopping

incomes increment. Hence, installing sensors on unauthorized areas where people frequently park their car can help to detect illegal parking and can issue a penalty charge, as with electric vehicles, and disable parking stalls. Third, once the traffic is fluent, it increases urban mobility and expands cities' capacity.

There has quite recently been a ton of investigation coordinated to improve halting adequacy at shut parking carports similarly as open parking carports which are paid parking carports and moreover maintain the booking of parking spots. Also, there are more expanded online applications that give splendid halting organizations in shut parking zones. In any case, open parking regions that don't maintain reservation and uninhibitedly available for confined a proportion of time and are regularly situated outside including a ton of room. Subsequently, it is acknowledged that driver direct could be successful at whatever point improved decision help to drivers are promoted. The areal size of the enormous open parking carports can be diminished by improving halting efficiency close by lessened blockage and CO2 releases.

Internet of things is one of the fastest-growing technological fields and analytics shows that overall 9.1 billion connected IoT devices are currently working around the globe, and also these numbers increase faster [32]. IoT industries are mainly divided into three segments where the first one is manufacturing (\$178 billion), the second one is Transportation (\$78 billion) and the third one is Utilities (\$68 billion) were the numbers are from the year 2016 and it may raise around \$1.29 trillion till 2020.[33] The market of Internet of Things is booming fast as the number of services, systems, and connected devices are growing rapidly. The Internet of Things alludes to the quickly developing number of advanced gadgets, these gadgets can impart and cooperate with others over organization/web worldwide and they can be distantly observed and controlled. Moreover, The Internet of Things includes smart sensors and other devices and even on the operational level of Internet of Things, like when data is collected.

Internet of Things offers new opportunities for cities to use data to manage traffic, reducing pollution, make better use of infrastructure, and keep citizens clean and safe. Furthermore, Internet of Things helps people who are residing in smart cities to help them to predict parking availability spaces in nearby areas and they can be able to find the optimal route from their current locations via Internet of Things devices. So, Internet of Things is a great communication channel that helps people to find their shortest routes to reach their destination in less time very efficiently and effectively as it offers less cost for its usage.

The focus of the thesis is to understand the concepts which have been already proposed or implemented by the academia or researchers. These concepts use different sensors for collecting the information regarding the parking space, and based on that data different models are applied such as deep learning, neural network, machine learning, fuzzy logic for a better utilization of the space. With a proper elaboration of all the technologies, the concepts are efficient when they utilize a combination several technologies. Many sensor or devices such as cameras, ultrasonic sensors and many more are used for collecting the information regarding of the free space for parking and to process the data many models have been proposed.

The thesis has been divided into 5 sections. The first section introduces the scenario regarding parking space and parking congestion problem. The second section elaborates the technologies already used to provide a good solution for the parking. The third section introduces the existing smart parking solutions based on street parking, off street parking, parking statistics, sensor-based smart parking implementation, image processing based intelligent parking system and so on. The fourth section provides information regarding of next generation of parking solutions based on image processing with the use of the neural network. Finally, section 5 gives about current and potential future smart parking solutions.

2 Sensors Used in Smart Parking

Various sensors support distinguishing halting parking occupancy information and these are referred to in the going with portions. Sensors are one of the shared devices which were broadly tried in excess of a couple of past bits of writing. Depictions of these sensors are referenced in the accompanying areas.

2.1 Camera

A technique for information recuperation is by using the camcorders of stopping territories, which have the wellness to deal with pictures without any other person without the assistance of external devices or estimations. This licenses controlling various vehicles with one piece of stuff. This system also prompts the turn of events/advancement of another piece of the structure focused in on tolerating and setting up those photos. For the present circumstance, a commonplace strategy is the usage of wide-point cameras alongside a request count to discover the stopping lines and set up the status of room, as depicted in [1]. Plus, a philosophy that incorporates toward the back cameras is portrayed in [2]. The chief purpose of this work is to help drivers stopping in a picked mark/spot by utilizing a touch screen. This technique is made out of three phases: bird's-eye see advancement, rule affirmation, and ID of halting secluding lines. The makers propose a novel method to manage work with continuous pictures. This self-loader action has incredible execution and needn't bother with hardware changes as shown by the makers.

Moreover, it is conceivable to utilize normal outside cameras to improve the precision of location via preparing the calculation with pictures taken in various climate conditions [3]. The makers moreover explain another course of action, which incorporates taking care of an image of the region taken from a camera in a data base alongside the headings of each space, and a short time later differentiating the set aside picture and the photos that are sent ceaselessly to develop if a stopping region has been included or not. In the present circumstance, consider that when camcorders are used outside, efficiency can be lessened in view of environment conditions, whether or not the movement stage was performed with pictures of more two or three environment conditions. In any case, concerning indoor stopping zones, this can be a sensible/achievable option since pictures are not affected by environment conditions. Pictures are taken care of in an informational collection close by the headings of each and every one of the parking structures and can be differentiated and pictures that are being sent consistently to choose whether an opening is included or not.

There are other solutions where users are involved to set up parking slots occupancy through cameras installed in their vehicles as stated in [4]. This proposition claims to assist drivers with sidestepping/avoid stopping in unlawful spots by offering a constant framework. The creators use occasion recorders to assemble data. The procedure used to choose the opportunity of room is static picture streaming. In this framework, drivers produce a stopping demand through a portable Android application, and the reaction contains the area of the spot. The portable application additionally accumulates data through the camera. The framework gathers and manages pictures and recordings to decide and recommend an accessible parking spot.

These days, cameras are turning into a key component of vehicles, streets, and cell phones. They catch continuous data with a bigger number of highlights than different sensors. In spite of the fact that they rely upon a powerful backend and appropriate climate to handle information and metadata for delivering results, they are a decent wellspring of data.

2.2 Passive Infrared Sensor

These sensors distinguish energy changes and when a vehicle consumes a parking space, these sensors perceive the adjustment in energy and recognize occupancy [5]. The sensor sees a change in energy when a vehicle is set or an individual leftover over the sensor. Considering the proportion of energy change, it will in general be used to isolate inconsistencies. Regardless, these sensors are responsive to the environment and they would not be accurate when there is day away from work deluge. Inert infrared sensors should be set under the earth/ground or on the rooftop. Therefore, they require high theory for the procurement and upkeep of these sensors. These sensors would be sensible for closed parking carports which are inside constructions and are not fitting for outside open parking carports.



Figure – 1: Passive Infrared Sensor Working[17]

2.3 Active Infrared Sensor

These sensors would deliver/radiate infrared energy and find any article or vehicle by the measure of energy reflected [5]. They are similarly tricky to environmental changes, for instance, storm or three day weekend. Accordingly, they should be set in all the parking spots and require high hypothesis and backing. Passing on sensors in all the parking spots would help with accomplishing halting parking occupancy status. These sensors are regularly situated overhead and are sensible for indoor closed parking carports. As these sensors are sensitive to normal changes it isn't legitimate to open parking territories.

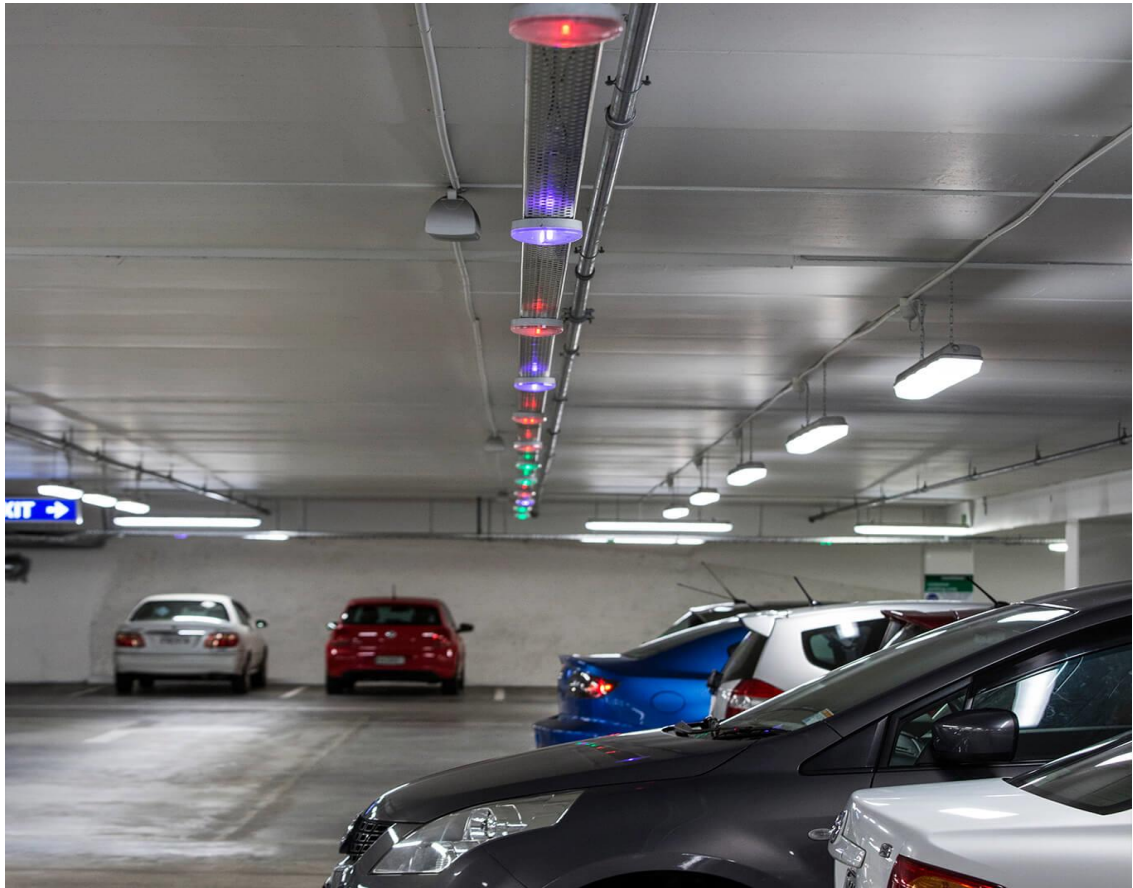


Figure – 2: Active Infrared Sensor Working[18]

2.4 Ultrasonic Sensor

These sensors produce waves on a chose repeat and measure the distance among itself and the thing that stays in its wave's manner. Because of its productivity and precision, an extraordinary amount of shrewd stopping arrangements has been proposed dependent on this innovation [6]. These sensors are utilized to recognize a parking area status (free or involved). There are different kinds of advances that are used in past endeavors to send and deal with data made from sensors. For instance, placing a sensor in a high circumstance of the spot and sending data to raspberry through Wi-Fi. Moreover, through a connection, for instance, in, or interfacing it to an Arduino that is significant for a XBee network [7], it is possible to relate a sensor to a HTTP specialist that in like manner licenses affirming stopping part openness. Also, an answer proposed the usage of a far off association called Xmesh[8]. Additionally, close by the movement of development, new executions incorporate LPWAN progressions, for instance, LoRa that interface sensors for the transmission of the parking spot status [9].

Ultrasonic sensors are completed adjusted which infers that there is one sensor for each halting space. In addition, notice that these sensors are insignificant exertion and their revelation precision is high.

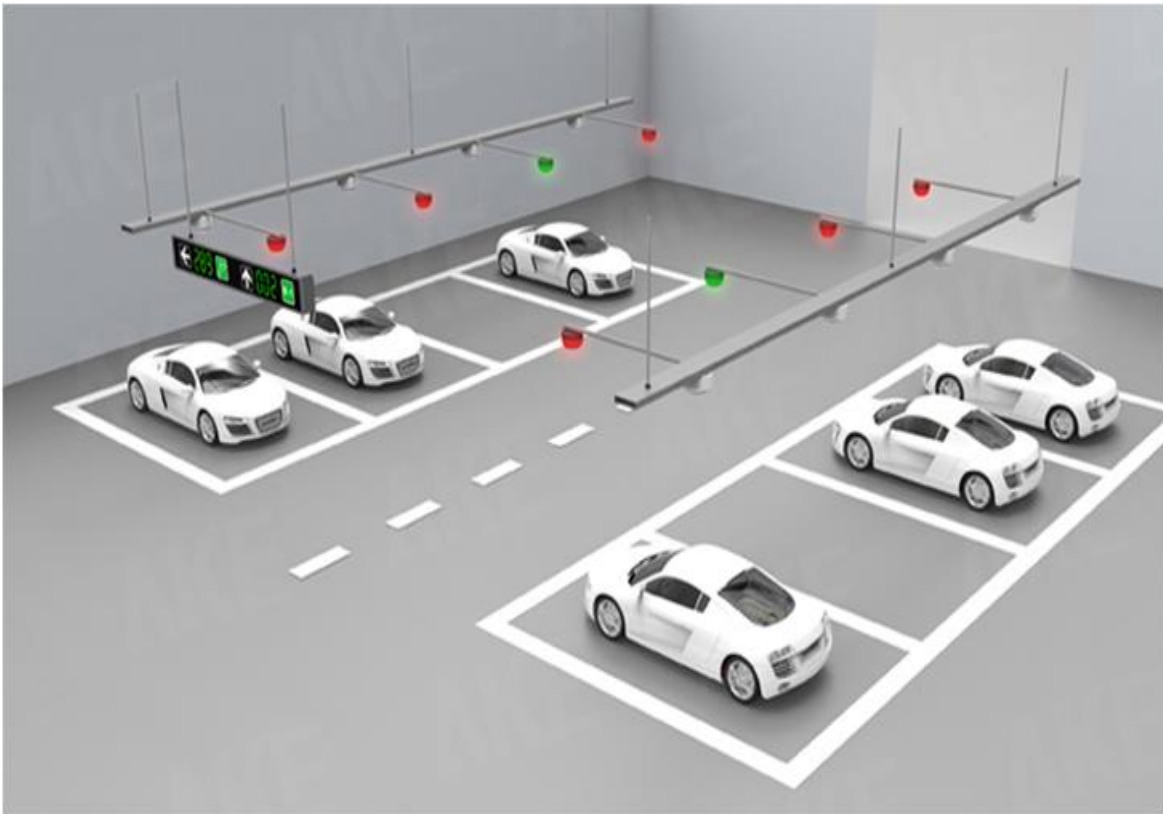


Figure – 3: Ultrasonic Sensor Working[19]

2.5 Cellular Sensors

Telephones have ended up being a gadget of awesome use in individuals' bit by bit works out, subsequently they have been broadly utilized in designs for sharp ending. One of the approachs consolidates checking Wi-Fi relationship to set up the individual that is in the leaving parking space both when the vehicle is as a result left and when the client is hitting it up. The cell's accelerometer and whirligig choose whether the vehicle is moving when the customer is inside it [10]. Additionally, another philosophy/method incorporates developing an exact circumstance by making a region profile [11]. The two frameworks are utilized to pick whether the customer leaves his vehicle in a leaving opening in a specific zone that could be an indoor or outside/outside leaving parking space. GPS sensors are similarly used as an application that sends the customer's zone and allows the structure to make a glow map with the acquired information showing free and distant stopping openings [12]

Moreover, the usage of QR codes that are proposed to be analyzed by customers' cells, would be obliging/useful for finding their parking spots and their information would be transported off the game plan's laborer so the status can be revived, allowing customers to get the territory of their vehicles viably in case they need it [13]. Utilizing such a sensors gives more prospects to the degree utilizing sensors, in any case makes the essential for an assessment to figure out which mix is the great see an individual inside a vehicle and when the vehicle was left in a leaving space. Wireless consolidate sensors like accelerometers, spinners, and magnetometers. These gadgets are central for our bit by bit life and are extensively utilized. Drivers are passing on them persistently so they could be utilized as an amazing wellspring of data. The information they produce goes under de-referenced which perceives express spots in a guide. To spread it out essentially, a Smartphone watches out for a sensor with many inserted wellsprings of data that in like way gives drivers to see data gathered through various wise stopping frameworks.

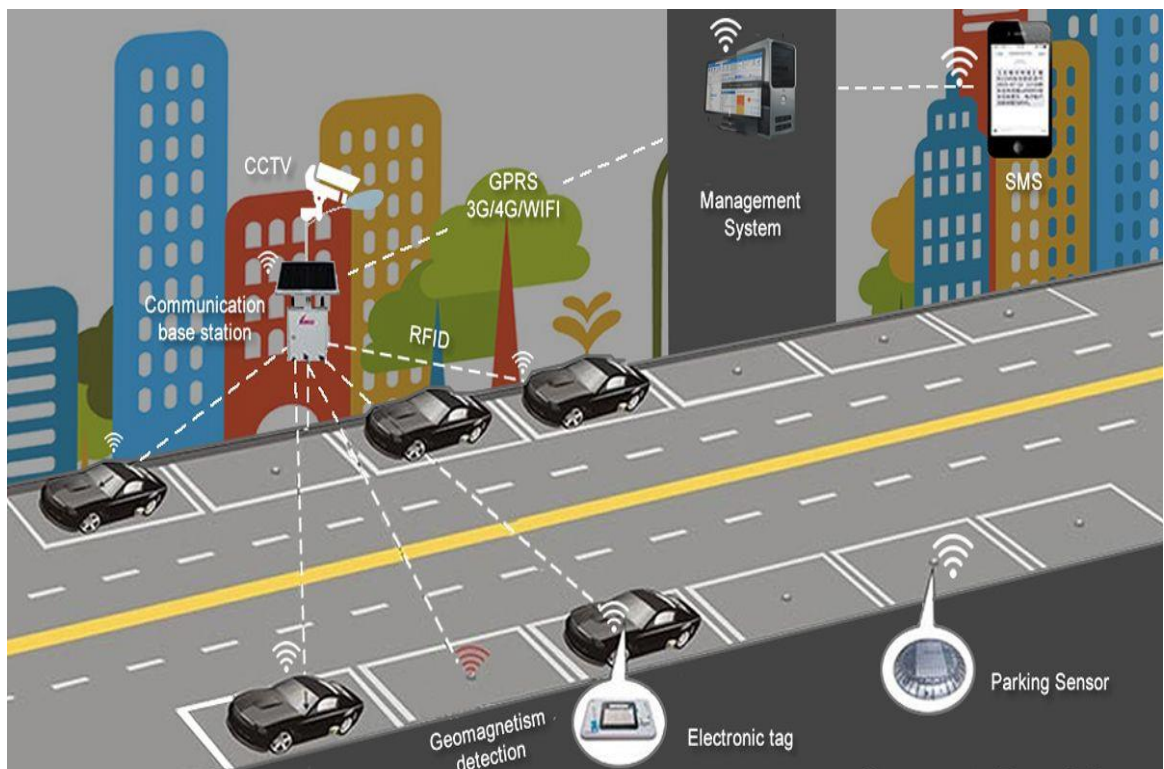


Figure – 4: Cellular Sensors Working[20]

2.6 Wireless Magnetometer Sensor

These sensors identify the presence of the vehicle by distinguishing the adjustment in an electromagnetic field. They must be near the vehicle, in this way, they are put under

the surface. They are not delicate to the climate [5]. These are suitable for both open and shut parking areas. There are remote sensors with a battery life of a couple of years that can be utilized to distinguish constant stopping parking occupancy data. The sensors ought to be set under each parking spot to know the parking occupancy of parking spots. Nonetheless, it is costly to introduce and keep up these sensors for an enormous scope.



Figure – 5: Magnetometer Sensor[23]

2.7 Inductive Loop Detectors

These identifiers are presented/updated using an underground wiring system and they use the principal feelings of electromagnetism to perceive the presence of a vehicle [5]. They are normally used at the way and exit to know the check of the vehicles which can be used to know the openness of parking spots. These markers are exorbitant to present and keep up [14] and they are by and large used in indoor parking carports to get the check of open parking spots. An exact count of vehicles would be given using

these finders in a shut parking territory and these are being utilized at various business/gainful parking territories. Nevertheless, particular halting parking occupancy status can't be accomplished using inductive circle markers.

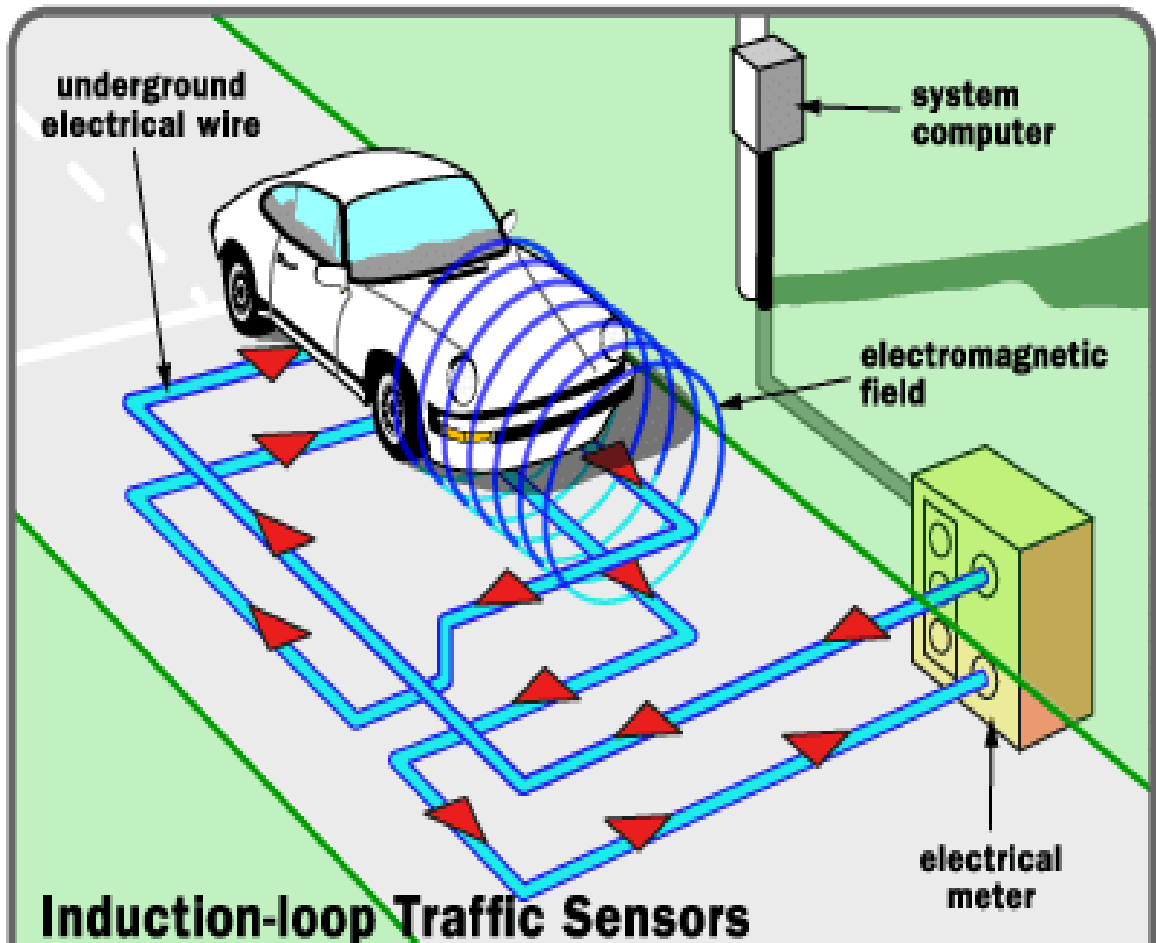


Figure – 6: Inductive Loop Detectors Working [21]

2.8 Global Positioning System (GPS)

GPS based navigational bearings are given to the driver to consuming an empty parking spot. GPS will encourage finding the briefest/ideal course from the current area. Notwithstanding, GPS alone can't accumulate parking occupancy data on parking spots. In one investigation parking occupancy of parking spots is assessed utilizing authentic parking occupancy data and navigational headings are given utilizing GPS to the assessed parking spot [15]. The precision of the GPS with a solitary recurrence collector is not many meters. In the event that a double recurrence collector is utilized, the precision is short of what one meter. Ordinary parking spot would be between 2.3 to 2.7 meters and the greater part of the PDAs are furnished with a solitary recurrence

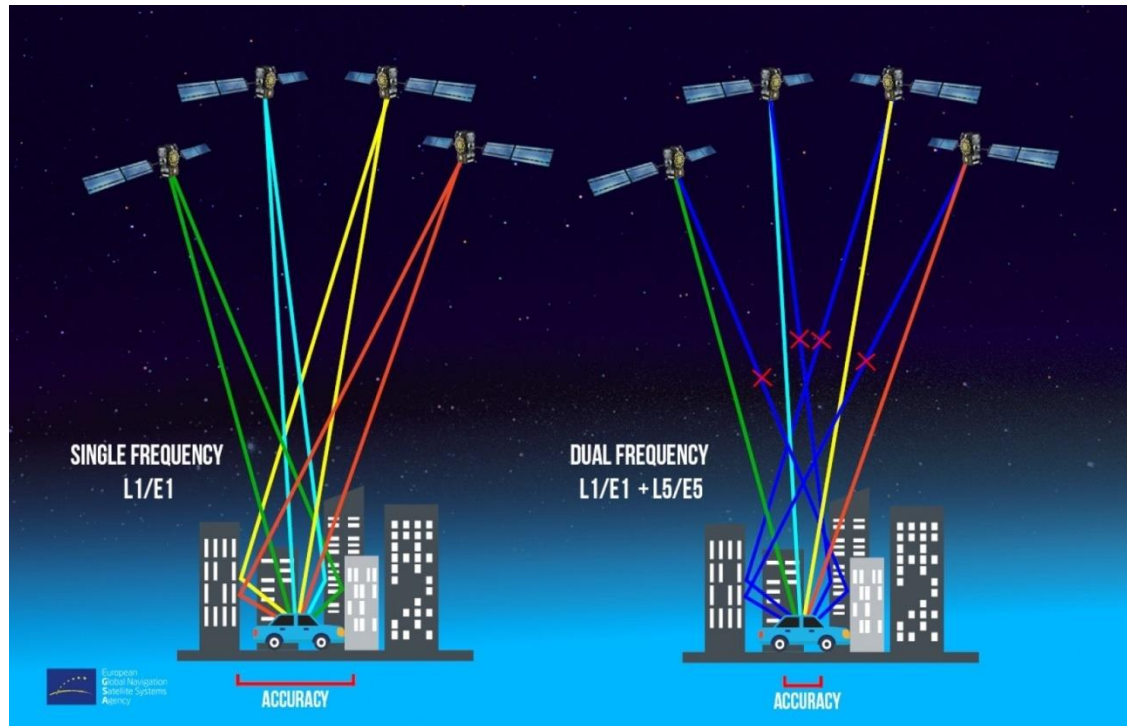


Figure 8 : Galileo Satellite Navigation System[25]

2.10 Microwave Radar

Microwave radar sends a microwave bar and reliant on the reflected sign it assesses the speed of the moving goal. Regardless, it doesn't perceive fixed articles. To take out this constraint/limit, twofold microwave Doppler radar can be used to discover both moving and fixed vehicles [16]. These can be mounted or put under the surface for vehicle acknowledgment. These radars are not open to the environment and can be used in open and shut parking carports. They should be set in each parking spot to recognize halting parking occupancy status making them expensive to present and keep up these microwave radars for an enormous degree.

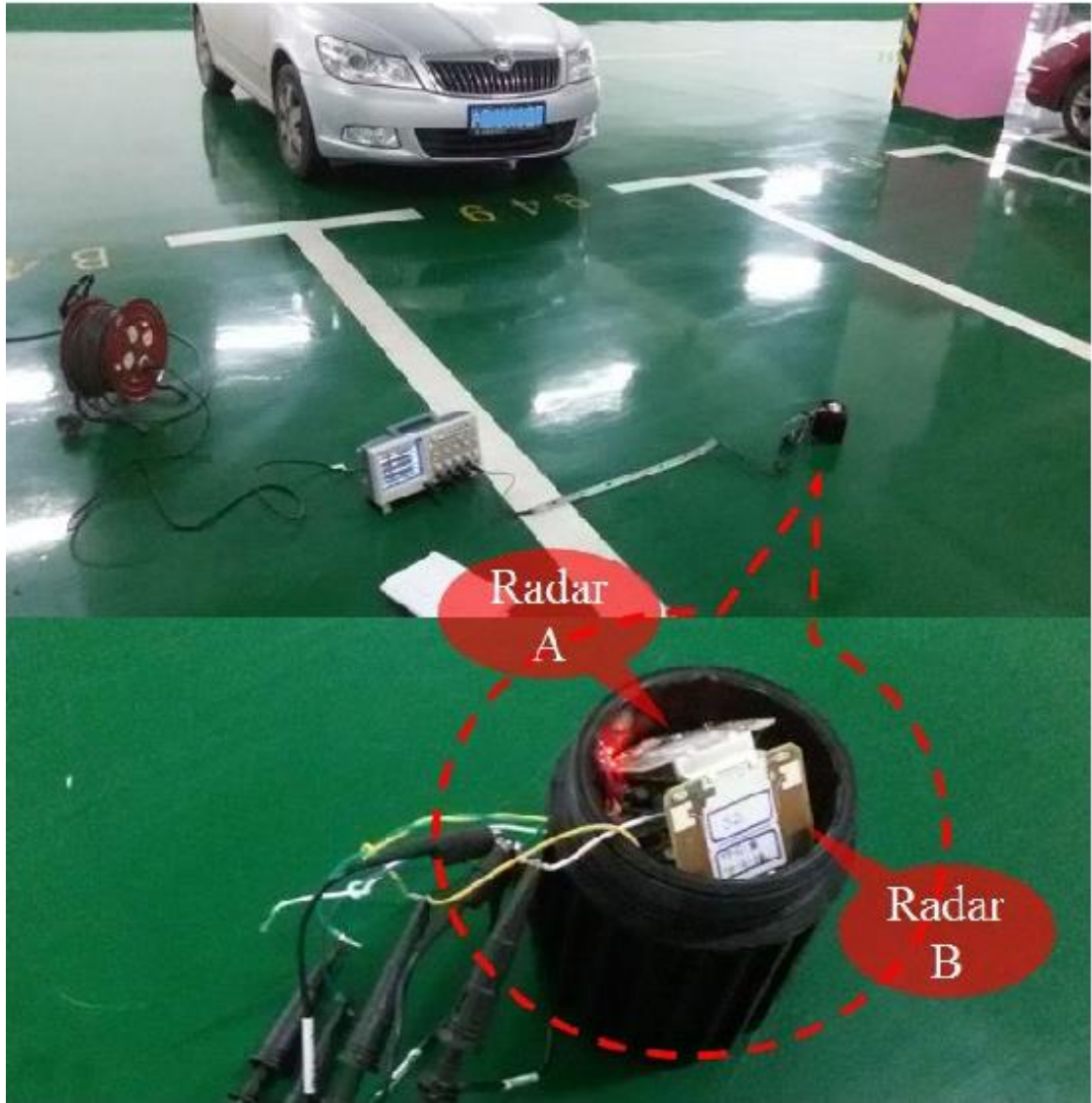


Figure – 9: Microwave Radar Sensor [24]

3 Existing Smart Parking Solutions

This sections discusses the various solution used for smart parking system. It is clear from all the references underneath that classes and orders of shrewd stopping differ from source to source. Some depend on the innovation utilized while others rely upon information preparing to recover data about the stopping statuses. To understand the existing scenario first understand the parking style and parameter which are considered to get the smart parking.

3.1 Parking System

There are majorly two types of parking system which are followed by any cities.

3.1.1 On-Street Parking

On-road leaving implies the vehicles are left on the sides of the actual road. This will be typically constrained by government organizations themselves. Normal sorts of on-road stopping are recorded beneath. This order depends on the point at which the vehicles are left to the street arrangement. As per Indian Roads Congress, the standard dimensions of a car are taken as 5× 2.5 meters and that for a truck is 3.75× 7.5 meters [32].

3.1.2 Parallel Parking

The vehicles are left along the length of the street. Here there is no retrogressive development included while leaving or un-leaving the vehicle. In this way, it is the most secure stopping from the mishap point of view. Notwithstanding, it burns-through the greatest control length and thusly just a base number of vehicles can be left for a given check length. This strategy for stopping produces minimal impediment to the on-going traffic out and about since the least street width is utilized. Parallel parking of cars is shown in Figure 10.

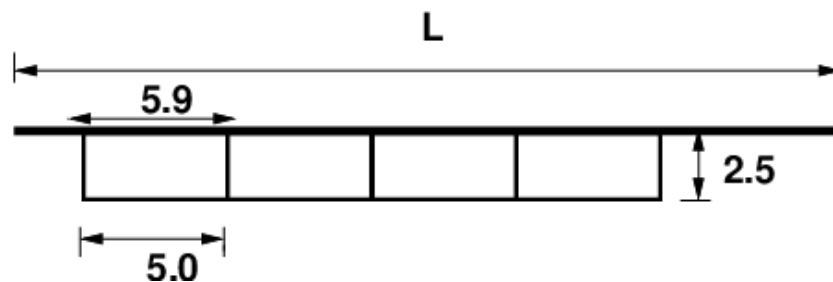


Figure – 10: parallel parking

The length required to park N number of vehicles is $L = N \times 5.9\text{m}$.

30° parking

In thirty-degree leaving, the vehicles are left at 30° to the street arrangement. For this situation, more vehicles can be left contrasted with equal leaving. Likewise, there is a superior mobility. Postponement caused to the traffic is additionally least in this sort of stopping. An example is shown in figure 2. From the Figure 11 one can count:

$$\begin{aligned}
 AB &= OB \sin 30^\circ = 1.25, \\
 BC &= OP \cos 30^\circ = 4.33, \\
 BD &= DQ \cos 60^\circ = 5, \\
 CD &= BD - BC = 5 - 4.33 = 0.67, \\
 AB + BC &= 1.25 + 4.33 = 5.58
 \end{aligned}$$

For N vehicles, $L = AC + (N-1)CE = 5.58 + (N-1)5 = 0.58 + 5N$

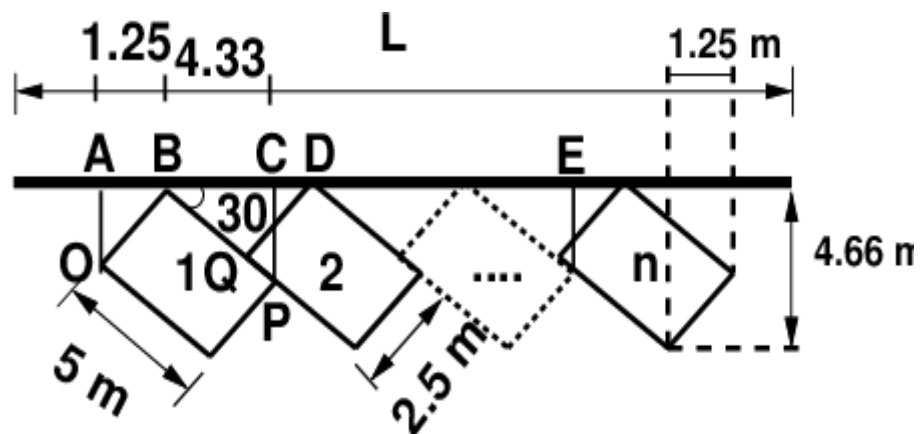


Figure – 11: 30° parking

45° parking

As the point of leaving expands, more number of vehicles can be left. Thus contrasted with equal leaving and thirty-degree leaving, more number of vehicles can be obliged in this kind of leaving. From Figure 12, the length of parking spot accessible for leaving N number of vehicles in a given check is $L = 3.54 N + 1.77$.

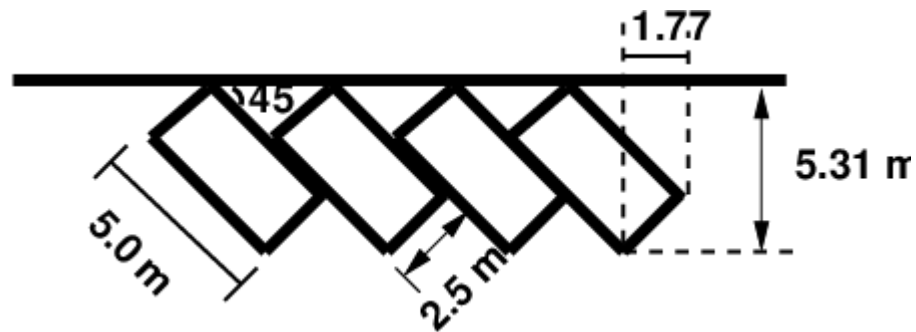


Figure – 12: 45° parking

60° Parking

The vehicles are parked at 60° in the direction of the road. More number of vehicles can be accommodated in this parking type. From Figure 13, length available for parking N vehicles = $2.89N + 2.16$.

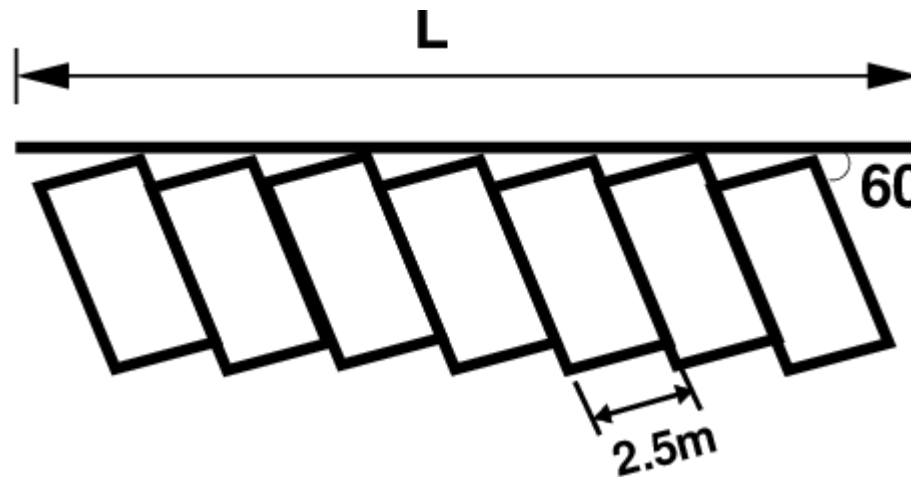


Figure – 13: 60° parking

3.1.2.1 Right Angle Parking

In right-point leaving or 90° leaving, the vehicles are left inverse to the heading of the road. Notwithstanding the way that it eats up most noteworthy width control length required is hardly anything. In such a leaving, the vehicles need complex moving and this may cause genuine incidents. This arrangement impedes the road traffic particularly if the road width is less. Regardless, it can oblige a most extraordinary number of vehicles for a given check length. A model is showed up in Figure 14. Length open for leaving N number of vehicles is $L = 2.5N$.

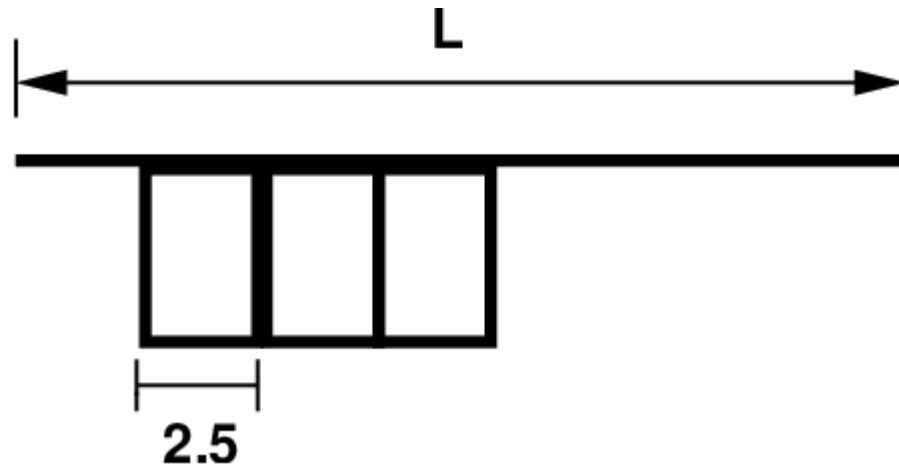


Figure – 14: 90° parking

3.1.3 Off-Street Parking

In numerous metropolitan communities, a few territories are solely distributed for stopping which are at some separation away from the standard of traffic. Such stopping is alluded to as off-road stopping. They might be worked by either open organizations or private firms. A run of the mill format of off-road stopping is appeared in Figure 15.

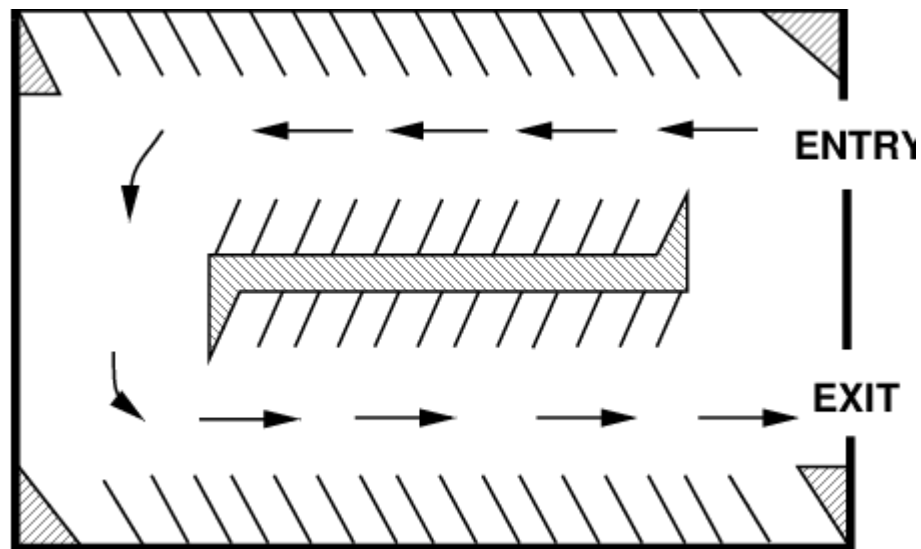


Figure – 15: off-street parking

3.2 Parking Statistics [26]

Prior to taking any measures for the improvement of conditions, information with respect to accessibility of parking spot, the degree of its utilization, and stopping request are fundamental. It is likewise needed to assess the stopping charges. Stopping overviews are expected to give every one of these snippets of data. Since the term of leaving fluctuates with various vehicles, a few measurements are utilized to get to the leaving need. The following parking statistics are normally important [26].

1. **Parking accumulation:** It is characterized as the quantity of vehicles left at a given moment of time. Typically this is communicated by the collection bend. The amassing bend is the diagram gotten by plotting the quantity of coves busy regarding time.
2. **Parking volume:** Leaving volume is the all-out number of vehicles left at a given span of time. This doesn't represent the reiteration of vehicles. The real volume of vehicles entered in the territory is recorded.
3. **Parking load:** Stopping load gives the region under the collection bend. It can likewise be acquired by basically duplicating the quantity of vehicles possessing the leaving territory at each time stretch with the time span. It is communicated as vehicle hours.
4. **Average parking duration:** It is the ratio of total vehicle hours to the number of vehicles parked.

$$\text{parking duration} = \frac{\text{parking load}}{\text{parking volume}}$$

5. **Parking turnover:** It is the proportion of the quantity of vehicles left in term to the quantity of leaving inlets accessible. This can be expressed as the number of vehicles per day per time duration.

$$\text{parking turnover} = \frac{\text{parking volume}}{\text{no. of bays available}}$$

6. **Parking index:** The parking index is also called occupancy or efficiency. It is defined as the ratio of how many bays are occupied in time duration to the total space available. It gives an aggregate measure of how effectively the parking space is utilized. The parking index can be found out as follows:

$$\text{parking index} = \frac{\text{parking load}}{\text{parking capacity}} \times 100$$

3.3 Sensor-Based Smart Parking Implementation

In this Muhammad Alam proposed Micro I/O built up a keen parking framework as portrayed in Figure 16 that is reasonable for both indoor and outside conditions [27]. The made structure relies upon distant appealing sensors as depicted in Figure 17 that are passed on the ground in each parking spot for the different parking occupancy distinguishing proof. The system is feasible with various customer stages for the board and driver course to available spaces and interoperable with a couple of relating

structures, for instance, LED sheets, marks, pointers, alerts, and obstacles. Regarding design, the framework comprises of three significant layers [27]:

- (i) The endpoints layer, including the stopping sensors and actuators.
- (ii) The correspondence layer, enveloping doors and repeaters, to connect the interchanges between the endpoints and the remainder of the framework.
- (iii) The programming layer, comprising of all cloud-based segments answerable for information assortment, parsing, stockpiling, and arrangement, from the web administrations and data sets to the different client stages.

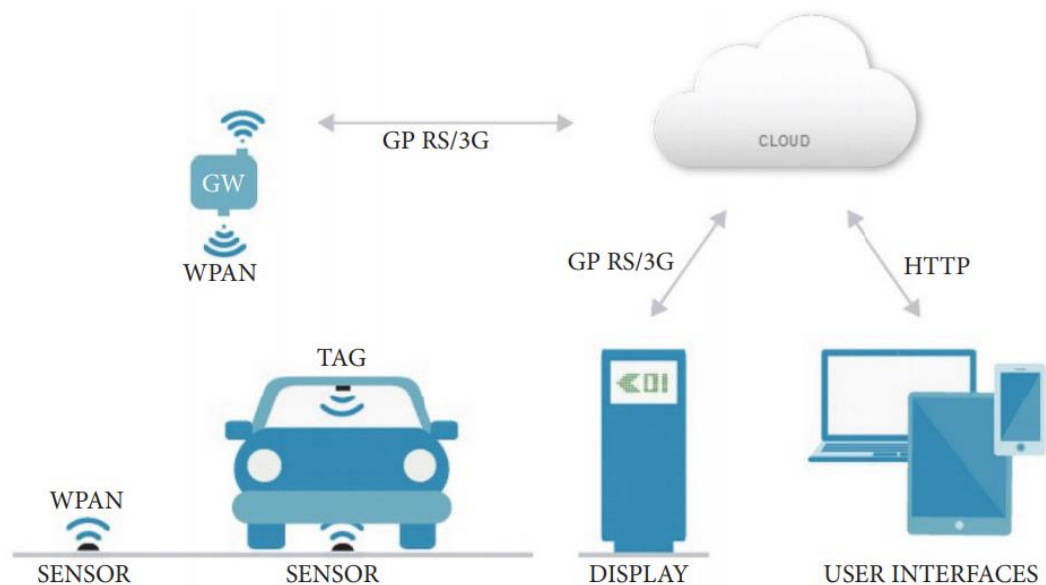


Figure – 16: Smart Parking Overview based on Sensors [27]

The sensor doesn't need cabling, as it highlights inaccessible correspondences and internal batteries for power. The contraption is introduced inside a plastic holder, which is then piled up with epoxy, and after the epoxy has set, the gadget is totally removed. The exemplification engages all out impermeability and the ability to withstand remarkable squeezing factor (as the weight of the vehicle) [27].



Figure – 17: Installed sensors [27]

After embodied, the sensor is of simple and quick arrangement. It just required the utilization of asphaltic paste underneath the sensor and little pressing factor after its sending on the ground, trailed by not many trusting that the paste will dry and achieve a hearty obsession to the ground. The sensor firmware can be distantly moved to the gadget. The framework highlights FOTA (Firmware Over The Air). To introduce the sensor, a gave magnet must be approximated to the sensor. The gadget incorporates a reed sensor that will identify the presence of the magnet and enact the gadget. The sensor includes a 3-pivot computerized magnetometer (Free scale MAG3110) for vehicular identification, through the impression of the minor departure from the Earth's attractive field, brought about by the entry/presence of the vehicle above it. The sensor has a decided testing rate and if the greatness of the readings conquers the calculation's characterized edges, the status change is imparted to the framework.

The magnetometer's reasonableness fluctuates with the temperature, is affected both by the temperature of its environmental factors and the openness to daylight. For an appropriate activity, the sensor requires alignment and temperature remuneration, in the event of varieties. For this reason, the MAG3110 highlights a temperature sensor, and tests are additionally brought the attractive readings, for pay/recalibration, if important. As indicated by the application necessities, as far as interchanges reach and gadget self-rule, the picked correspondences innovation was LORA, over 868MHz. This innovation empowers interchanges to go up to 200m and low force utilizations.. There can be two types of communications [27]:

- (i) Status change notification: following an inspecting occasion, the information is examined and, on the off chance that a status change is identified, the sensor sends the particular correspondence/notice to the framework.
- (ii) I'm live notification: if no status change is checked for a characterized period, the sensor sends an "I'm alive" notice to the framework, showing it is working appropriately.

The gadget self-rule addresses its lifetime. The sensors can highlight up to 4 AA low self-release Li-SOCI2 batteries (SAFT LS14500, 3.6V, and 2.6Ah). Notwithstanding, because of the perpetual epoxy epitome, the batteries are not replaceable nor battery-powered; along these lines power the board is of incredible pertinence. To grow the

gadget's life expectancy, the cycles including examining, information preparing, and correspondences were improved [27]:

1. Sampling: to lessen the time the microchip is wakeful, however not trade off the nature of administration levels, by guaranteeing brief announcements, the characterized inspecting periodicity is of 4 seconds. After the gadget is initiated, at like clockwork the microchip will awaken from rest, take an example, and, if no change is distinguished, return to rest.
2. Processing: to lessen power utilization, the chose chip was the (Low Power) Microchip PIC18LF26K22-I/SS. Its force utilization in rest mode (at which it is more often than not) is, roughly, $1\mu\text{A}$.
3. Communications: interchanges are the most force burning-through cycles. The picked interchanges innovation, LoRa on the 868MHz band, empowers low force devouring correspondences, however the periodicity and term (size) of the interchanges was likewise upgraded, for more prominent force investment funds.

Sensors were deployed on an outdoor parking lot to avail the car parking experience on a typical working day.

A layout of the chart shows a 12-hour window plan, and a higher parking occupancy rate some place in the scope of 8 and 20 followed by an unexpected lessening and almost opportunity in the overabundance hours. Besides, it tends to be seen that the parking parcel isn't utilized in full limit having its most extreme participation somewhere in the range of 10:00 and 12:00 (95%). After this pinnacle, the quantity of involved parking openings progressively drops until arriving at the finish of the 12.

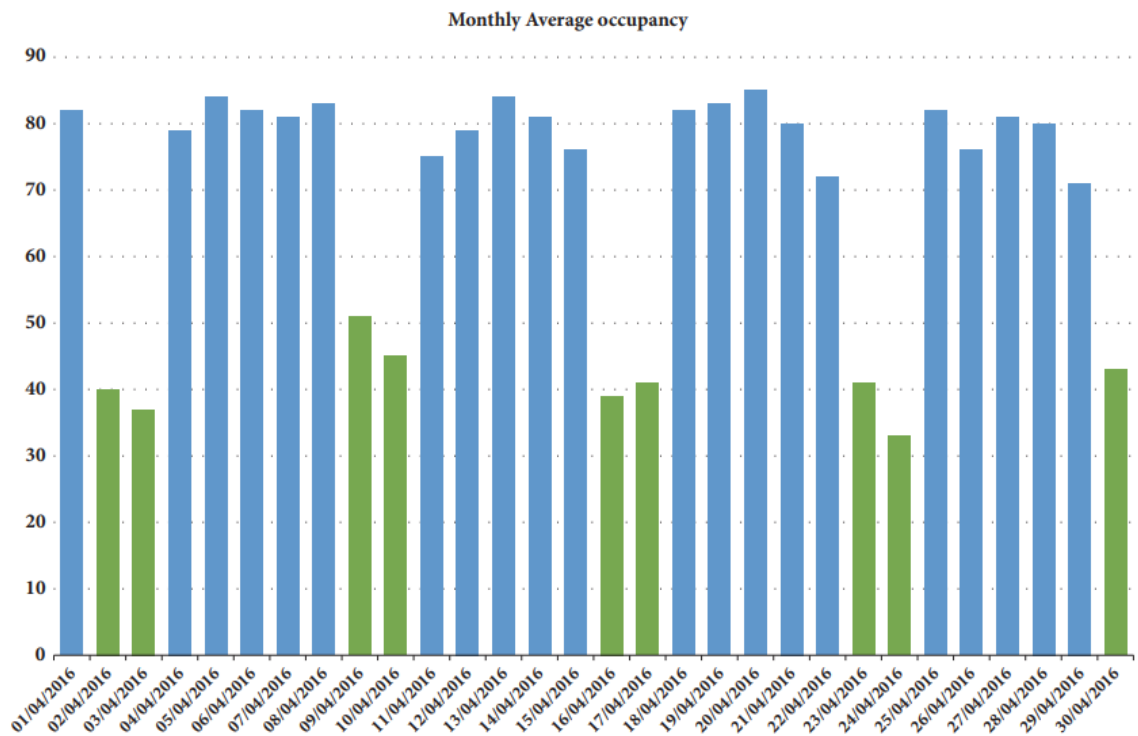


Figure – 18: Whole month Parking Occupancy [27]

hour window. These outcomes and ensuing examples can be clarified by the recreation center region, generally made out of working spaces to be specific: workplaces and the college grounds. This statement was additionally confirmed by the low vehicle leave participation during ends of the week appeared in the normal parking occupancy in the period of April portrayed in Figure 19. The diagram likewise shows a slight reduction in the quantity of vehicles left on Fridays. An alternate sending was likewise led on a private underground parking garage and coordinated with the framework. Six sensors were used and placed on different parking spaces, one of which was reserved for persons with disabilities (Park ID: 5048).

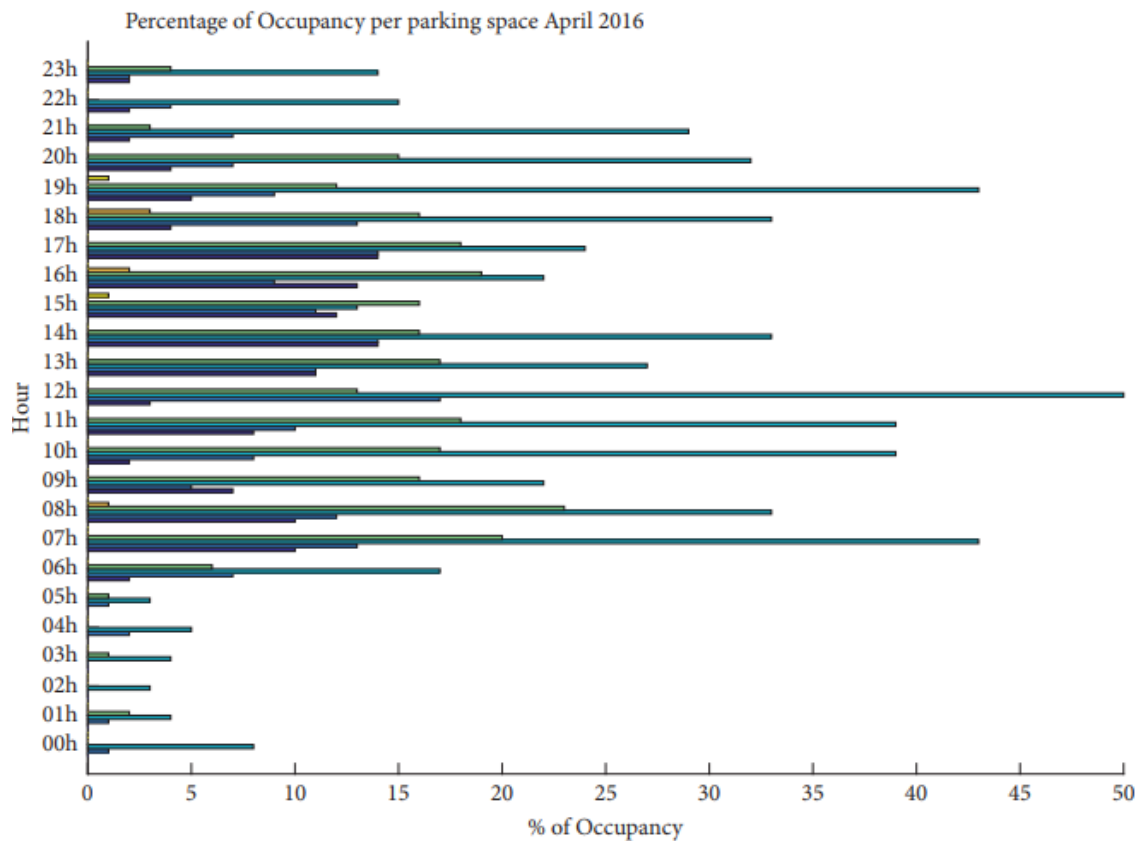


Figure – 19: Normal parking occupancy in a day of indoor parking [27]

Figure 20 shows the parking occupancy pace of each space each hour. The parking garage use was diminished all through the whole month, just one parking spot was regularly utilized and, all things considered, it had a greatest parking occupancy of half. Furthermore, both the stopping openings with ID 5058 and the incapacitated parking spot was not usually utilized, particularly the last one that was just involved multiple times. These outcomes can be defended by the absence of perceivability of the vehicle leave and the absence of data with respect to the quantity of empty parking spots. Accordingly, an application fit for giving continuous vehicle leave accessibility and free parking spots for close by drivers could improve both the parking area utilization as the whole leaving experience.

These sensor based system is deployed by the author at city of Pisa, Italy with 12 smart camera on 8 pole. The parking lots were monitored for a whole month and various occupancy data were recorded: they proved to be useful both to disseminate real time information to the tourist and commuters as well to design and deploy adaptive policies for access and payment of parking lot facilities[27].

3.4 Image Processing Based Intelligent Parking System

The proposed module by Karthik used the Image Processing Technique through the MATLAB as a software platform [28].The projected mechanism involves a five-step module to operate. The processing steps can be shown in the block diagram as shown in Fig. 21. As shown below [28].

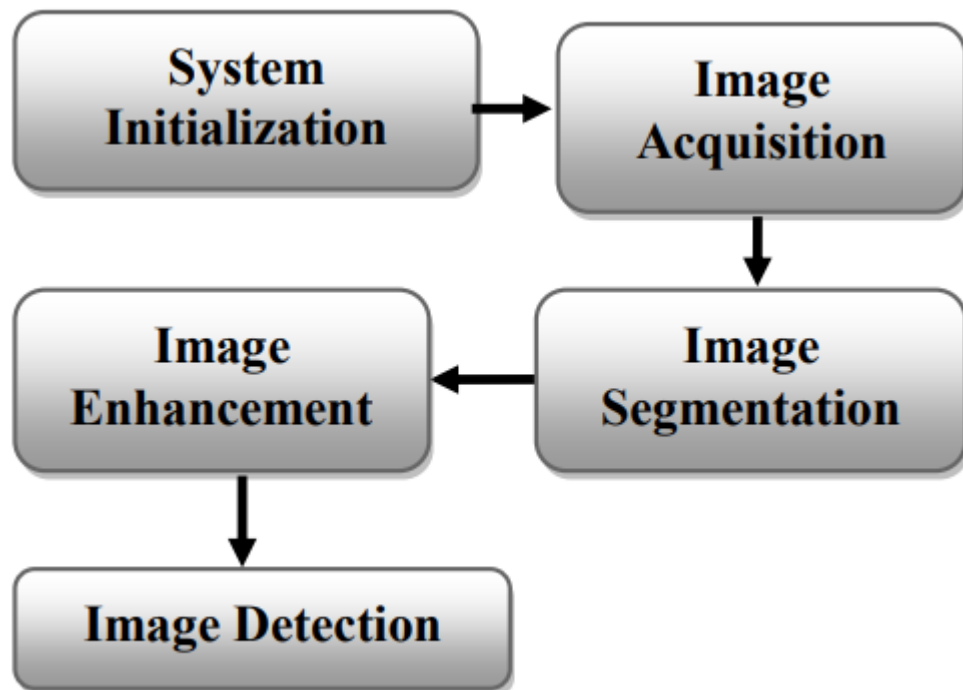


Figure – 21: System Flow [28]

Once the System Initialization module gets completed it can be allowed to the next processing component called as the image acquisition module in the Image Processing Techniques. In the Image Acquisition module, the Images can be captured from the parking area through the camera. The acquired images for the processing can be captured with high definition cameras present at the parking area [47-49]. The images can be captured by the camera by the top view and side view of the parking slot as shown in Figure. 22.



Figure – 22: Image Captured from Camera[28]

Image Segmentation is the next module present at the Image Processing Steps. Image Segmentation is a major part of the Image Processing technique which can be used to identify and analyze the image at a glance [29]. The process involved in the Image Segmentation is shown in the block diagram below.

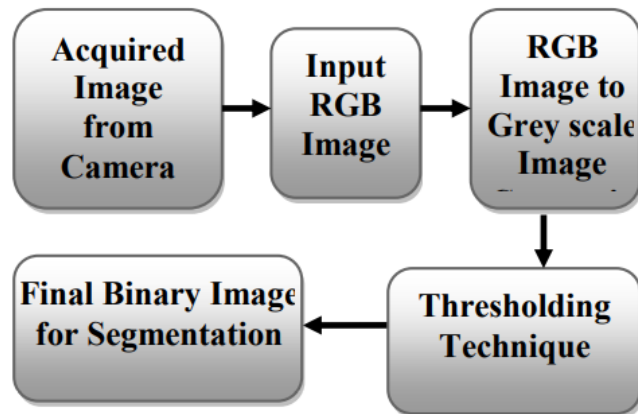


Figure – 23: Segmentation Process of Image [28]

The Image Segmentation process pre-processes every part of the image. The visual characteristics are obtained by considering the number of pixels present in that captured image. Thus the obtained image after the segmentation process will be a better quality output result. The obtained set of pixels can collectively provide the entire image. Thus the empty parking area in a parking slot can be recognized by the outline, edge, boundary, object [30]. The process involved in Image Segmentation is clustering that will partition the image into a number of cluster so that will easy to identify the objects and their boundaries from the images.



Figure – 24: Segmentation of Binary Image [28]

The leaving of a vehicle through picture preparing can be profoundly effective and more exact with no manual interference. The proposed design shows a stopping region with 8 openings of the stopping zone. In light of the limit esteem the Empty stopping zone can be shown through a camera see show unit. The showcase can be shown through a LED show. Notwithstanding the LED show, a sound framework has been interfaced to the framework plan. Accordingly the vehicle is detected by the sensor and the accessibility of the leaving region and proper leaving space can be educated to the driver through a sound declaration. Hence the proposed engineering is useful to leave the vehicle in the leaving region with no bending which brings about the leaving time decrease.

3.5 Deep Learning based smart parking solution using LSTM.

Creator proposes a significant learning based halting assumption system plan, All parts of the framework depend on cloud stage, including information gathering segment, information handling segment and application segment. Moreover, to decrease the expenditure of information assortment, the framework uses JUHE API, that is like Google API'S. In the preparing part, Long Short-Term Memory (LSTM) network is utilized to foresee the stopping accessibility. However, To improve the expectation exactness, creator thoroughly consider more factors, for example, season of day, climate and occasion and convey the preparation cycle of the model on the cloud stage to meet the prerequisite of elite processing. As the framework gives stopping forecast administration to more regions, gigantic information handling causes the framework cost to be not really acknowledged. To streamline the work process of the framework dependent on the versatile figuring administration given by the cloud stage, to improve the usage of framework assets and lessen the calculation cost. Besides, in framework's work processes, the verifiable information will have to prepare expectation model. At that point utilize the furthest down the line information to refresh the model dependent on the prepared model consistently, rather than retraining the model with verifiable information once more. It is critical for saving a large part of the calculation cost. The model refreshing assignment is executed like clockwork. At that point when the refreshing interaction finishes, the expectation outcomes of the following 2 hours will be saved to the information database. Hence, This work process is more practical for saving calculation cost, for the cycles of preparing and refreshing should be in running state constantly [32].

Figure – 25: System architecture[32]

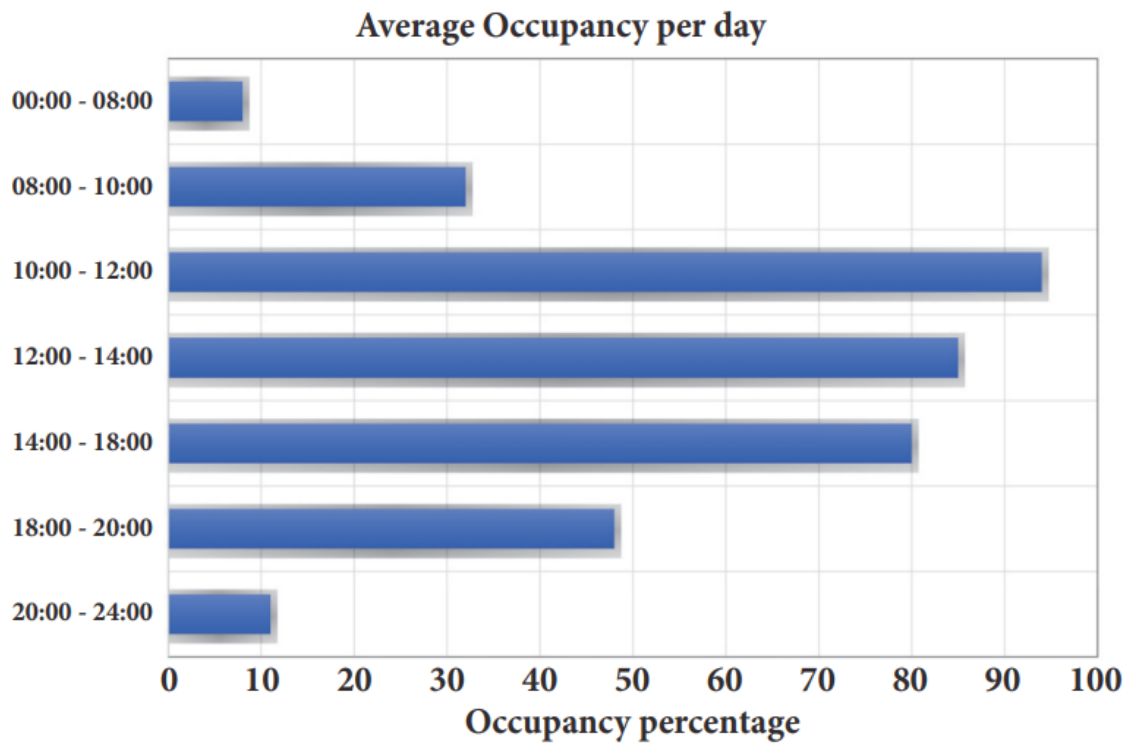


Figure – 25: System architecture[32]

The cloud based framework for foreseeing stopping accessibility. The framework can gather the continuous information through web API and utilize these information to anticipate the stopping conditions in a specific territory/province, including information assortment, information handling and data delivering. Moreover, Monster information volume and figuring efforts are enormous difficulties, so all the parts of the framework are conveyed on a cloud stage, which can give superior registering at a lower cost and cost. As is appeared in figure 25, the framework contains the accompanying fundamental parts [32].

- JUHE cloud stage, like Google APIS, is utilized as the framework crude information securing segment. It is a coordinated cloud stage that gives crude information through web API. Hence, The framework can gather ongoing information, for example, climate information, stopping, information and occasion information effectively, which are considered to affect stopping state of a specific territory.
- Data gathering and putting away part is between the crude information and the information handling segment. This part demands ongoing information from JuHe API at regular intervals and stores this information into the broadly utilized Hadoop data set, HBase. Information is separated into authentic information and most recent information for capacity. The previous is utilized for model

preparing while the last is utilized for model refreshing dependent on past prepared model.

- Elastic model preparing bunch segment utilizes the verifiable information in HBase to prepare expectation models. At that point when another parking area is added into the stopping gauge administration, this segment will utilize the gathered information for model formation and assess the precision of the model constantly until the model is adequately perfect to be placed into utilization. Therefore, In the event that the model is sent, the preparation cycle will be ended and the involved figuring assets will be delivered. Flexible figuring administration of the cloud stage is utilized to understand the on-request registering in the model preparing measure.
- Elastic model refreshing gathering segment refreshes the past prepared model with the most recent information and it can yield the expected impacts of the transient future (the following 2 hours). They don't have to retrain the model with all the verifiable information, for the furthest down the line information will be learned by the forecast model through the refreshing cycle. The refreshing interaction will execute at regular intervals to refresh the expectation consequences of the following 2 hours. This segment is additionally sent on versatile figuring stage, and more occurrences will be made intermittently (like clockwork), or when the forecast precision is lower than an edge esteem. (5) Application segment is utilized for accepting solicitations and dispersing the expectation results to customers, for example, Android APP. Utilizing the upsides of the cloud stage in better and lower cost is the conspicuous component of our framework. JuHe cloud stage assists us with getting information at a very lower cost; the cloud-based registering stage guarantees high accessibility of information gathering and handling. So, Flexible registration administration improves the usage of asset as powerful mentioning and delivering assets on interest. Through this assistance, the work process of the framework is totally improved, that makes the framework more affordable and viable/sustainable [32].

In view of this framework design the entire model structure work process of the LSTM network for stopping expectation including information preprocessing, model preparing and testing. Figure 26 shows the entire model structure work process of the expectation model.

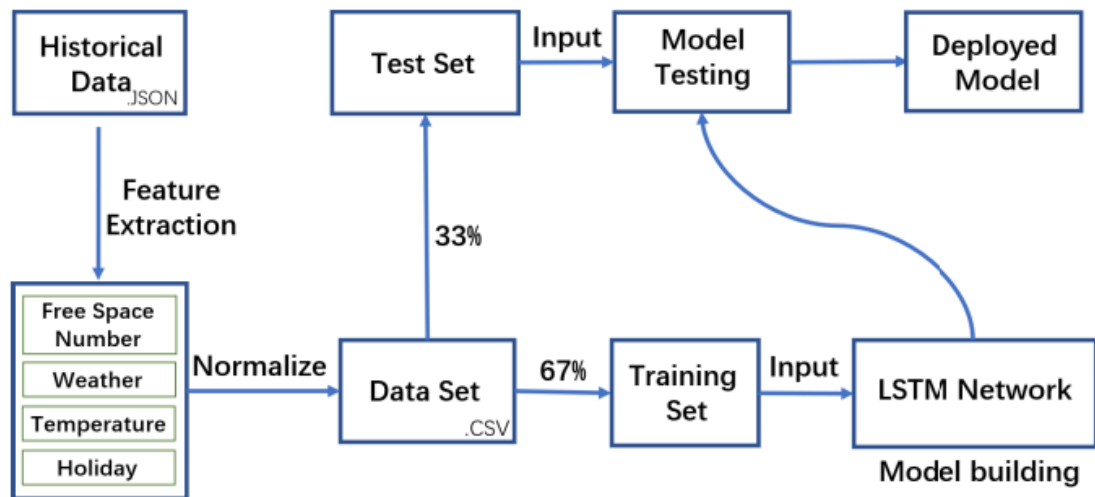


Figure – 26: Model Building Workflow [32]

LSTM network performs better in long haul forecast and can adequately react to crises for its capacity of long haul memory. LSTM is a decent decision for time arrangement forecast with long haul reliance [33]. Like the greater part of other profound learning models, the model preparing cycle of LSTM network additionally requires huge scope information. Creator gather crude information from JuHe API at regular intervals and save the information to the data set. The arrangement of the information is JSON and these information contain a ton of pointless data, so preprocessing of crude information is unavoidable, including highlight extraction and configuration change. Through the data set activity, separate the quantity of abandoned parking spots from the stopping information, the climate condition data from the climate information and the data whether today is working day. At that point the information coordinated into a period arrangement and save them as CSV. Assortment disappointment brought about by network issues brings about information missing. So that likewise needs to do information cleaning on the dataset. The normal estimation of the close by 3 minutes is utilized to fill the missing information. On the off chance that the adjoining information is likewise lost the normal worth utilized of all to fill the missing information. Figure 27 is an illustration of the dataset which used to prepare LSTM model. In this time arrangement, the configuration of time is year month day hour minute and the time venture between the nearby records is 3 minutes. The rundown of "Parking spot Left" shows the ongoing number of the vacant parking spot in this parking area. In the rundown of "Occasion", utilize 0 to address that today is working day and 1 methods not[32].

1	Time	Parking Spaces Left	Weather	Temperature	Holiday
2	2018_03_12_21_53	271	Sunny	7	0
3	2018_03_12_21_56	275	Sunny	7	0
4	2018_03_12_21_59	279	Sunny	7	0
5	2018_03_12_22_02	282	Sunny	7	0
6	2018_03_12_22_05	285	Sunny	7	0

Figure – 27: Data Structure of Preprocessed Dataset[32]

The information is isolated into two sections: the preparation dataset with 67% of the information and the test dataset with the last 33%. At that point, the proper boundaries are set to upgrade the presentation of the forecast. To improve the precision of stopping expectation dependent on LSTM model, Adam analyzer is utilized in LSTM model, which can decrease preparing blunders and dodge to be caught in seat point. Adam is a swap advancement calculation for stochastic inclination drop for preparing profound learning models. Then, just a single repetitive shrouded layer is utilized which has 32 units, for additional layers and more squares may prompt be over fitting. Mean Squared Error (MSE) is utilized as misfortune work in our model [32].

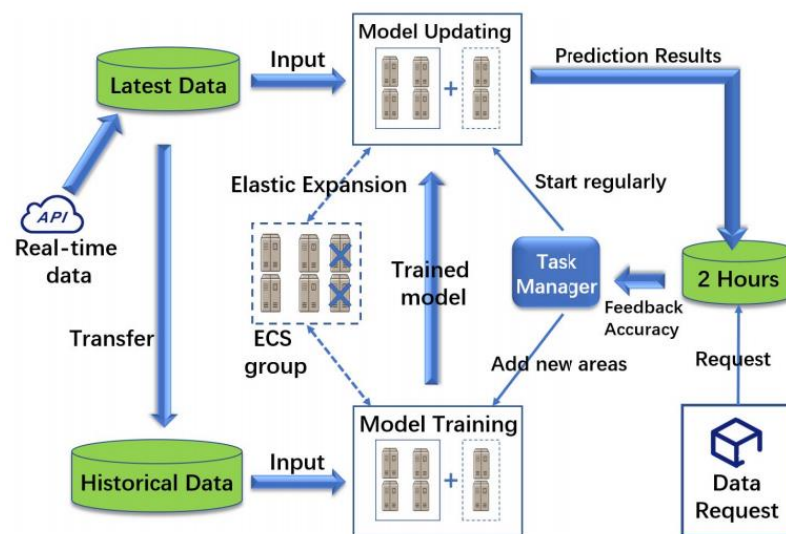


Figure – 28: Economical Workflow Based on ECS.[32]

Above figure portrayal of the powerful changes in asset prerequisites, the framework conveyed dependent on the flexible processing administrations (ECS). The authentic information are utilized to prepare the underlying model. Over the long haul, the exactness of the prepared expectation model will keep on declining. To improve the precision of the gauge administration, the most recent information gathered as of late should be added to the preparation sets to refresh the forecast model. It is satisfying that LSTM model permits to refresh expectation model with new information, rather than retraining model once more. The cycle of model preparing and refreshing are both

flexible, so send in two versatile gatherings. The Task Manager goes about as the chief of the two cycles. At the point when another parking area is added into the stopping expectation administration, the assignment chief will begin the model preparing measure. More ECS cases will be added into the model preparing flexible gathering and delivered toward the finish of preparing. The execution of model refreshing is occasional or set off. In the primary case, the errand director will begin the refreshing cycle at regular intervals. The most recent information of ongoing 2 hours will be utilized to refresh the past model. At that point the forecast consequences of the following 2 hours will be saved into the dataset, which clients can get to straightforwardly. For another situation, when some new occasions happen, for example, climate evolving unexpectedly, the data anticipated ahead of time may get off base. In the present circumstance, the assignment supervisor will screen the decrease in precision and afterward restart the refreshing interaction to improve the exactness.

The dataset from one of the 10 parking garages to test the capacity of LSTM. BP(Back Propagation) neural organization is chosen as examination [34]. The information of the initial 15 days to prepare models. The two models have been prepared for 200 ages on a similar equipment climate, the nearby PC. What's more, the prepared model update with the information of the following 2 hours. The interaction is rehashed for ordinarily, as the reenactment of the real refreshing cycle. After the finish of each model refreshing cycle, the conjecture results for the following 2 hours will be yield. These expectation results gathered and utilize the real information to test the precision of forecast. Figure 29 is an illustration of the examination of the anticipated outcomes among LSTM and BP in March 23, 2018. Y-pivot addresses the quantity of accessible parking spot (APS) and X-hub addresses the time arrangement (from 6:00 a.m.(2500) to 11:00 p.m.(2800))[32].

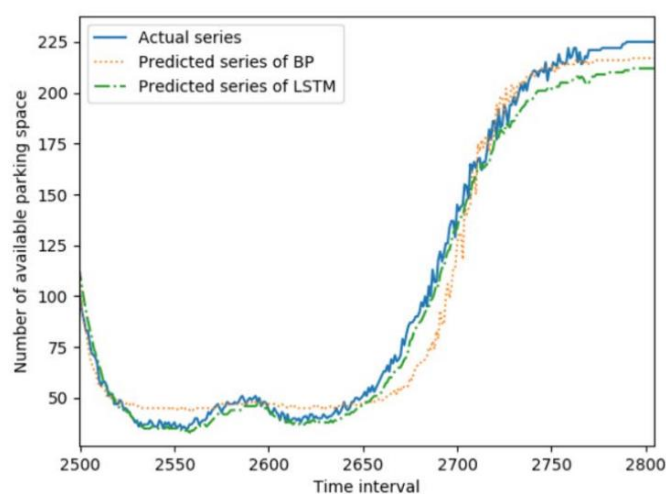


Figure – 29: Comparison between the Predicted Series of LSTM and BP.

The nearer the expectation bend is to the genuine bend, the higher the exactness is. It is plainly appeared in figure 5 that the vast majority of the anticipated consequences of LSTM are nearer to the real qualities. Clearly, the exhibition of LSTM is superior to BP organization's [32].

4 Next-Generation Smart Parking Solutions

Based on this literature review there are numerous answers for the savvy parking frameworks that utilization sensors for parking occupancy discovery in shut parking parts which require a lot of use for establishment and support exercises. The anticipated investigation based arrangements are additionally utilized by a few urban areas and nations for parking occupancy identifications which previously positioned in segment 3. The differentiation might be a direct result of less use in using judicious assessment than passing on sensors in all parking spots. In any case, steady parking occupancy information of parking spots can't be acquired using insightful examination, and the accuracy of halting parking occupancy information by openly supporting isn't trustworthy.

The stopping parking occupancy affirmation utilizing machine vision will change among shut and open parking garages as there can be fluctuating light conditions in an open outside parking garage. As alluded to already, challenges looked by low lighting and shadow conditions can be tended to. Subsequently, machine vision utilizing a visual camera is one of the possible marvelous ending progression for getting consistent ending parking occupancy data in open parking garages. Machine vision can be associated with convolution neural affiliations and huge learning for proficient picture gathering. Neural associations are used by and large for label affirmation and there are confined examinations that usage convolution neural associations for parking occupancy acknowledgment [35]. In any case, picture gathering exactness is high while utilizing convolution neural affiliations

In deep learning, large datasets such as Alexnet [29] are already available and additional data would facilitate in further improving image classification. Different technologies or image classification algorithms can be tested using PKLOT which is a publicly available outdoor parking lot images dataset [30]. Nonetheless, this dataset isn't proper if an infrared or warm camera is utilized for information assortment. Convolution neural organizations and profound learning are contemporary innovations that can be utilized in stopping parking occupancy identification of open parking garages. As use assumes a significant part in the decision of innovation, one can express that machine vision and multi-specialist frameworks alongside convolutional neural organizations are appropriate to give stopping parking occupancy data. Information gathered utilizing the visual camera would be handled utilizing picture characterization calculations or a convolutional neural organization to create stopping parking occupancy data.

Calculations, for example, strategic relapse, spiral premise work, uphold vector machines, choice tree, arbitrary woods, Viola and Jones object identifiers, and so on, can be utilized for design acknowledgment and picture order. Backing vector machines can be utilized to upgrade include extraction which would improve picture characterization. In strategies, for example, convolution neural organizations, test tests and train pictures ought to be gathered to prepare the organization. The nature of order would generally rely upon the prepared example pictures. The sample pictures comprise of various vehicles and parking spots under various ecological and light conditions. These pictures can be utilized to prepare the convolution neural organization for proficient picture characterization.

Utilization of a visual camera for social occasion parking occupancy data would likewise rely upon a country's security insurance laws. It very well may be utilized in broad daylight places with less limitations in nations, for example, the United Kingdom and the United States. However, in countries such as Sweden, usage of surveillance cameras is restricted unless it is used for preventing or investigating crimes [31]. An observation camera can be utilized with no limitations in the event that it is utilized in a private spot without the inclusion of people in general. In Sweden, a reconnaissance camera is limited to use in open parking dependent on security insurance laws. Along these lines, the use of reconnaissance cameras or comparable innovation might be exposed to singular nations' guidelines. To follow the guidelines, it is recommended to utilize a warm camera as the general population can't be recognized utilizing it. Warm cameras are costly contrasted with ordinary cameras. Since, either standard or warm based cameras can be utilized to cover countless parking spaces, the use associated with utilizing a warm camera probably won't be high contrasted with the use of underground sensors. Future examination can be made in utilizing a warm camera for parking occupancy identification.

Vehicle framework advancements are moving towards computerization and there are demonstrated advances, for example, leave help effectively accessible with new-age vehicles. Park help highlight will just assist with parking the vehicle without human intercession yet it doesn't wipe out blockage. Such highlights can be improved if the vehicle is given ongoing parking occupancy data. In this way, parking occupancy data of an open parking parcel can be assembled utilizing a monetarily achievable technique which can be associated with computerized driving vehicles for productive parking. The use of brilliant parking innovation or sensor for parking occupancy data may be changed dependent on the sort of parking parcel. On the off chance that a parking parcel is indoor and has less number of parking spaces, sensors, for example, magnetometers can likewise be utilized to gather parking occupancy data. In the event

that a parking parcel is outside, a visual camera could be utilized at a raised situation to cover the whole parking part. At the point when a parking space is refreshed the navigational bearings to enter the parking parcel may likewise be refreshed and this may be a test to address when the client is following navigational headings to a chose parking space. Future exploration can likewise be made to address this test.

5 Conclusion

The concept of smart cities has always been a dream for humanity. Since the past five to ten years of period large innovations and advancements have been made in making smart cities a reality. Moreover, the growth of Internet of Things and Cloud technologies have given a rise to new possibilities in terms of smart cities, smart parking facilities and traffic management systems have always been at the core of constructing smart cities.

The current splendid parking structure relies upon sensor advancement for parking occupancy similarly as the area in shut parking parts which would require an extensive proportion of utilization for the foundation and backing works out. Regardless, steady occupancy information of parking spaces couldn't be acquired using perceptive examination, and the precision of parking occupancy information by openly supporting isn't reliable. Be short of useful returns can be one explanation behind not giving steady occupancy information of open parking packages also. Since there would not be any brief money related increments with the use of smart parking at open parking packages it would be well ready to use a sensor or advancement with unimportant use to make it fiscally viable. A canny parking application would help the drivers as a decision sincerely steady organize and can similarly help in diminishing obstruct. In any case, using a sharp parking system is optional and few drivers likely will not be favorable in using an application for parking occupancy, land use, blockage, and defilement control is simply possible if every driver is using the application which isn't basically possible.

According to the thesis, a few sharp parking structures is made with the help of sensors and developments like a neural association, significant learning, machine vision was attempted and examined at this point sensor or advances were generally used for the closed parking parts which maintain reservation. None of the advances were used to improve the capability of parking in open parking packages. Ultrasonic and infrared sensors are fragile to normal conditions which may incite mistaken parking occupancy information and moreover they are exorbitant to fit/develop and keep up at open parking openings. The parking occupancy ID using machine vision will vary among shut and open parking openings in view of the light conditions in outdoors parking parts. Troubles looked by low lighting and shadow conditions can be tended to. Machine vision using a visual camera is one of the reachable wise parking

development for getting consistent parking occupancy information in open parking parts. So picture portrayal is used to perceive the parking openness.

With the context of all these theoretical analyses, there is no single perfect technology appropriate for parking occupancy and detection. In light of parking parcels and size, an alternate mix of shrewd parking innovations and sensors can be utilized for effective and monetarily practical parking occupancy identification. so the aim of this thesis provides a smart solution with the sensor which will further process the data by the bootstrapping approach and provide the parking lots to the drivers but again for the open parking lots there are lots of challenges that need to focused like proper object is going to recognize and most concern is drivers are used that in daily routines. The future scope of these systems is focused on image processing with a neural network or deep learning but again the financial cost may raise.

References

1. Shih, S.E.; Tsai, W.H. A convenient vision-based system for automatic detection of parking spaces in indoor parking lots using wide-angle cameras. *IEEE Trans. Veh. Technol.* **2014**.
2. Jung, H.G. Semi-automatic parking slot marking recognition for intelligent parking assist systems. *J. Eng.* **2014**, *2014*, 8–15.
3. Baroffio, L.; Bondi, L.; Cesana, M.; Redondi, A.E.; Tagliasacchi, M. A visual sensor network for parking lot occupancy detection in Smart Cities. In *Proceedings of the IEEE World Forum on Internet of Things, WF-IoT 2015, Milan, Italy, 14–16 December 2016*; pp. 745–750.
4. Yang, C.F.; Ju, Y.H.; Hsieh, C.Y.; Lin, C.Y.; Tsai, M.H.; Chang, H.L. parking—A real-time parking space monitoring and guiding system. *Veh. Commun.* **2017**, *9*, 301–305.
5. Shaheen, S., Smart parking management field test: A bay area rapid transit (BART) district parking demonstration. *Institute of Transportation Studies*, 2005.
6. Lin, T.; Rivano, H.; Le Mouel, F. A Survey of Smart Parking Solutions. *IEEE Trans. Intell. Transp. Syst.* **2017**, *18*, 3229–3253..
7. Sahfitri, A.; Husni, N.L.; Nawawi, M.; Lutfi, I.; Silvia, A.; Prihatini, E. Smart Parking Using Wireless Sensor Network System. In *Proceedings of the 2018 International Conference on Electrical Engineering and Computer Science (ICECOS), Pangkal Pinang, Indonesia, 2–4 October 2018*; pp. 117–122.
8. Geng, Y.; Cassandras, C.G. A new “Smart Parking” System Infrastructure and Implementation. *Procedia Soc. Behav. Sci.* **2012**
9. Kodali, R.K.; Borra, K.Y.; G. N., S.S.; Domma, H.J. An IoT Based Smart Parking System Using LoRa. In *Proceedings of the 2018 International Conference on Cyber-Enabled Distributed Computing and Knowledge Discovery (CyberC), Zhengzhou, China, 18–20 October 2018*; pp. 151–1513

10. Nawaz, S.; Efstratiou, C.; Mascolo, C. Smart Sensing Systems for the Daily Drive. *IEEE Pervasive Comput.* 2016, 15, 39–43.
11. Krieg, J.G.; Jakllari, G.; Toma, H.; Beylot, A.L. Unlocking the smartphone's sensors for smart city parking. *Pervasive Mob. Comput.* 2018, 43, 78–95.
12. Jones, M.; Khan, A.; Kulkarni, P.; Carnelli, P.; Sooriyabandara, M. ParkUs 2.0: Automated Cruise Detection for Parking Availability Inference. In *Proceedings of the 14th EAI International Conference on Mobile and Ubiquitous Systems: Computing, Networking, and Services*; ACM: New York, NY, USA, 2017; pp. 242–251.
13. Santos-González, I.; Caballero-Gil, P.; Rivero-García, A.; Hernández-Goya, C. Poster: Indoor Location System for Vehicles. In *Proceedings of the 1st International Workshop on Experiences with the Design and Implementation of Smart Objects*; ACM: New York, NY, USA, 2015; pp. 27–28
14. Mouskos, K., M. Boile, and N.A. Parker, Technical solutions to overcrowded park and ride facilities. 2007, New Jersey Department of Transportation.
15. Pullola, S., P.K. Atrey, and A. El Saddik. Towards an intelligent GPS-based vehicle navigation system for finding street parking lots. in *Signal Processing and Communications, 2007. ICSPC 2007. IEEE International Conference on.* 2007. IEEE.
16. Bao, X., et al., A novel dual microwave Doppler radar-based vehicle detection sensor for parking lot occupancy detection. *IEICE Electronics Express*, 2017: p. 1-12.
17. Passive Infrared Sensor - Biovobez Passive Infrared Sensor, Rs 1450 /piece Custom Logics Private Limited | ID: 21665380091 (indiamart.com)
18. Active Infrared Sensor - Vehicle Detection Sensors - Smart Parking
19. Ultrasonic Sensor - Parking Slot Vehicle Detection Ultrasonic Sensor - Buy Parking Slot Vehicle Detection Ultrasonic Sensor, Parking Slot Vehicle DetetiUltrasonic Sensor, Parking Slot Vehicle Detection Ultrasonic Sensor Product on Alibaba.com

20. Cellular Sensors - Smart Parking and IoT: Envisioning the Potential (aeris.com)
21. Inductive Loop Detectors - Inductive Loop Detectors. | Download Scientific Diagram (researchgate.net)
22. Global Positioning System - Internet of Things Archives - Page 4 of 12 - Mobiloitte Blog
23. Magnetometer Sensor
24. Microwave Radar Sensor - [PDF] A novel dual microwave Doppler radar-based vehicle detection sensor for parking lot occupancy detection | Semantic Scholar
25. [Galileo \(satellite navigation\) - Wikipedia](#)
26. Parking Analysis "[Parking Studies \(iitb.ac.in\)](#)"
27. Muhammad Alam, Davide Moroni, Gabriele Pieri, Marco Tampucci, Miguel Gomes, José Fonseca, Joaquim Ferreira, and Giuseppe Riccardo Leone "Real-Time Smart Parking Systems Integration in Distributed ITS for Smart Cities" Journal of Advanced Transportation Volume 2018, Article ID 1485652
28. Karthik. K, Sridevi. A Vivek. C" Image processing based intelligent parking system", 2017 International Conference on Electrical, Instrumentation, and Communication Engineering (ICEICE2017)
29. parking spaces", Inform. & Commun, vol. 143, pp. 76-77, 2014. n Anal and Mach.Intell., vol.PAM1-3(1) pp.12-19.
30. R. Yusnita, Fariza Norbaya, and Norazwinawati Basharuddin, "Intelligent Parking Space Detection System Based on Image Processing", International Journal of Innovation, Management and Technology, vol. 3, no. 3, June 2012
31. IRC Standards for Parking Areas for Development (1988) - Annex 2 Example Standards for Parking Areas for Development - Module 4: Guidelines for Parking Measures: Policy and Options (adb.org)
32. Jiachang Li, Jiming Li, Haitao Zhang, "Deep Learning based Parking Prediction on Cloud Platform", 2018 4th International Conference on Big Data Computing and Communications.

33. X. Ma, Z. Tao and Y. Wang, "Long short-term memory neural network for traffic speed prediction using remote microwave sensor data", *Transportation Research Part C: Emerging Technologies*, vol. 54, pp. 187-197, 2015.
34. Z. Xiao, S. J. Ye, B. Zhong, and et al., "BP neural network with rough set for short term load forecasting", *Expert Systems with Applications*," vol. 36, no. 1, pp. 273-279, Jan. 2009.
35. Vijay Paidi, Hasan Fleyeh, Johan Håkansson and Roger G. Nyberg "Smart Parking Tools Suitability for Open Parking Lots: a Review", *Proceedings of the 4th International Conference on Vehicle Technology and Intelligent Transport Systems* (pp. 600-609). Madeira