

OSTOKOMPONENTIT

Munsch MAK-58-D	~7000 €
Festo DNCB-80-250-PPV-A	158,00 €
Festo Accessories SG-M20x1,5	29,60 €
Festo Accessories SNCS-80	73,60 €
Festo Accessories SNC-80	28,30 €
Festo DSNU-20-100-P-A	43,70 €
Mekanex K20-S20 noin 3,5 metriä	
Rollco SBI25FL-2-K1-500 kaksi kappaletta	
Rollco SBI20FL-1-K1-180	
Sodemann GF-14-300-250	
RHS 100x100 mm putkea noin 17 metriä	~17,6 €/m
RHS 100x60 mm putkea noin 2,5 metriä	~13,8 €/m
RHS 100x40 mm putkea noin 7 metriä	~12,5 €/m
RHS 80x40 mm putkea noin 2 metriä	~10,1 €/m



Data sheet

Part no.: 532892

Page:1



DNCB-80-250-PPV-A

Standard cylinder

Feature	Data/description
Stroke	250 mm
Piston diameter	80 mm
Cushioning	Pneumatic cushioning, adjustable at both ends (PPV)
Assembly position	Any
Conforms to standard	CETOP RP 52 P ISO 15552 ISO 6431 NF E49 003 1 UNI 10290
Design structure	Piston Piston rod Profile barrel
Position detection	with proximity sensor
Operating pressure	0,6 - 12 bar
Mode of operation	double-acting
Operating medium	Dried compressed air, lubricated or unlubricated
Corrosion resistance classification CRC	2
Ambient temperature	-20 - 80 °C
Cushioning length	32 mm
Theoretical force at 6 bar, return stroke	2 721 N
Theoretical force at 6 bar, advance stroke	3 016 N
Moving mass with 0 mm stroke	800 g
Additional weight per 10 mm stroke	92 g
Basic weight for 0 mm stroke	3 135 g
Additional mass factor per 10 mm of stroke	39 g
Mounting type	with accessories

FESTO

Catalogue page

Part no.: **174387**

Page:1

SNC-80 (Accessories)**Swivel flange**

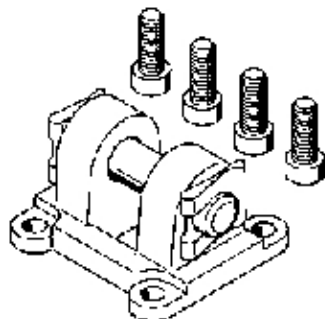
For cylinders DNC, AEVC, ADVC.

Swivel flange for cylinders with hole pattern per
VDMA 24562
Suitable clevis foot LSNG/LSNSG

- SNG: standard
- SNC: profile optimised for standard cylinder DNC

Scope of delivery: 1 flange with pivot pin and 4
mounting screws

The pivot pin is secured against rotation with a
dowel pin.



FESTO

Catalogue page

Part no.: **174401**

Page:1

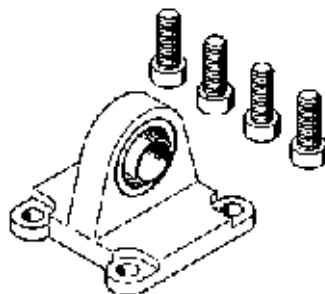
SNCS-80 (Accessories)**Swivel flange**

For cylinders DNC, AEVC, ADVC.

Swivel flange with spherical bearing for cylinders
with hole pattern per VDMA 24562
Suitable clevis foot LBG

- SSNG: standard
- SNCS: profile optimised for standard cylinder
DNC

Scope of delivery: 1 flange and 4 mounting screws



FESTO

Data sheet

Part no.: **6147**

Page:1

SG-M20x1,5**Rod clevis**

Feature	Data/description
Size	M20x1,5
Assembly position	Any
Conforms to standard	DIN ISO 8140 CETOP RP 102 P
Threaded connection	Female thread M20x1.5
Corrosion resistance classification CRC	2
Product weight	720 g
Materials note	Copper and Teflon-free
Materials information for rod eye	Steel Galvanised
Materials information for ball pin	Steel Galvanised
Materials information for nut	Steel Galvanised



Data sheet

Part no.: 19212

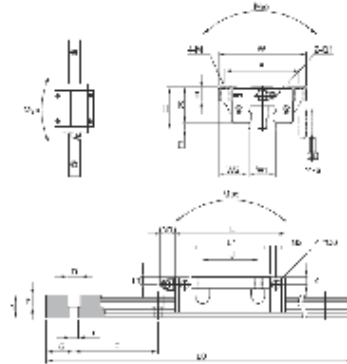
Page:1

**DSNU-20-100-P-A****Standard cylinder**

Feature	Data/description
Stroke	100 mm
Piston diameter	20 mm
Piston rod thread	M8
Cushioning	Pneumatic cushioning, adjustable at both ends (PPV)
Assembly position	Any
Conforms to standard	ISO 6432
Piston-rod end	Male thread
Design structure	Piston Piston rod
Position detection	with proximity sensor
Variants	Single-ended piston rod
Operating pressure	1 - 10 bar
Mode of operation	double-acting
Operating medium	Dried compressed air, lubricated or unlubricated
Corrosion resistance classification CRC	2
Ambient temperature	-20 - 80 °C
Impact energy in end positions	7,2 J
Theoretical force at 6 bar, return stroke	158,3 N
Theoretical force at 6 bar, advance stroke	188,5 N
Moving mass with 0 mm stroke	44 g
Additional weight per 10 mm stroke	7,2 g
Basic weight for 0 mm stroke	186,8 g
Additional mass factor per 10 mm of stroke	4 g

Rail Guide type SBI-FL

New improved precision rail guide, wide type. Slider applicable for top and bottom mounting.



Artikkelinumero

SBI25FL-2-K1-500-10-10

Nimi

SBI 25 FL



Vaunutyyppi	SBI..FL
Koko	25
Vaunujen lukumäärä / johde	2
Voiteluyksikkö	No
Metallikaavin	No
Rasvanippa	Front - Standard
Asennusreiät johteessa	Top mounted - Countersunk top holes
Raydent-käsittely	No
Pituus	500
ensimmäisen reijän keskipisteeseen (G)	10
Esijännitysluokka	K1: Normal preload

Created: 2012-05-12 09:23:04

Address:

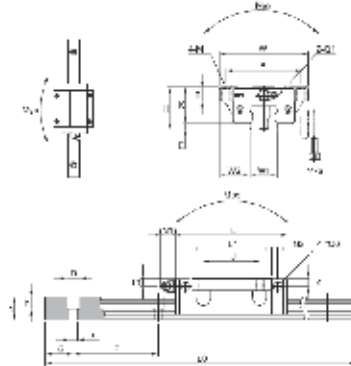
Rollco OY
Kuohuntie 2
36200 Kangasala
Finland

Phone:
Fax:
Web:
Email:

358 207 57 97 80
358 207 57 97 89
www.rollco.fi
info@rollco.fi

Rail Guide type SBI-FL

New improved precision rail guide, wide type. Slider applicable for top and bottom mounting.



Artikkelinumero

SBI20FL-1-K1-180-30-30

Nimi

SBI 20 FL



Vaunutyyppi	SBI..FL
Koko	20
Vaunujen lukumäärä / johde	1
Voiteluyksikkö	No
Metallikaavin	No
Rasvanippa	Front - Standard
Asennusreiät johteessa	Top mounted - Countersunk top holes
Raydent-käsittely	No
Pituus	180
ensimmäisen reijän keskipisteeseen (G)	30
Esijännitysluokka	K1: Normal preload

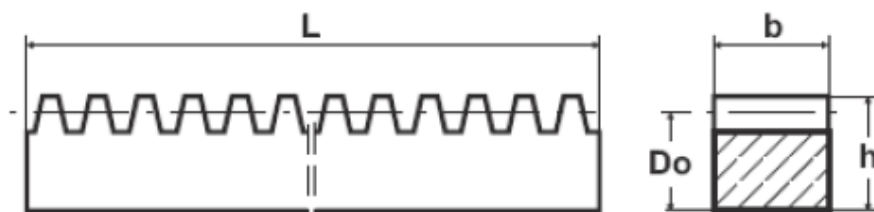
Created: 2012-05-12 11:26:40

Address: Rolco OY
Kuchuntie 2
38200 Kangasala
Finland

Phone: 358 207 57 97 90
Fax: 358 207 57 97 99
Web: www.rolco.fi
Email: info@rolco.fi



Gear Racks, Square



Order No.

K250500-S20

Type

Kuggstång

Modul	2,5
Material	Stål
L (mm)	500
Continues Mounting	
b (mm)	20
Do (mm)	17,5
h (mm)	20

Created: 2012-05-09 08:30:27

Address: Mekanex Maskin AB
Sjöängsvägen 11
192 72 Sollentuna
Sweden

Phone:
Web:
Email:

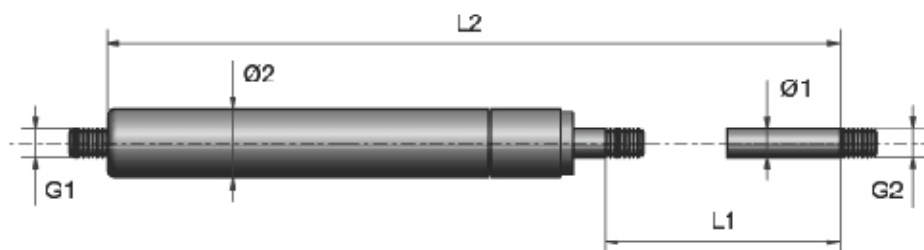
08 – 705 08 00
www.mekanex.se
info@mekanex.se

SODEMANN
INDUSTRIFJEDRE A/S



Kaasujousi GF -14

Männän halkaisija: 14 mm
Lanka: M10
Voima intervalli: 150N - 2500N



Varastonumero
GF-14-300-250
Tyyppi
Gas Spring



Ø1 mm	14
Ø2 mm	28
L1 mm	300
L2 mm	666
Voima N	250
Voima suhde K	1,5
G1 mm	M10*1,50
G2 mm	M10*1,50
Väri	Black
Paino gr.	789

Address: Sodemann Industrifjedre A/S
Industrivej 21
DK-8260 VIBY J
Denmark

Phone: 0045 86 72 00 99
Fax: 0045 86 20 97 88
Web: www.fjedre.dk, www.fjadrar.se, www.jouset.com,
www.fjaer.net, www.industrial-springs.com

BPWE Munsch MAK 58D Extruder Welder



[Detailed Product View](#)

BPWE Munsch MAK 58 D Extruder

Introducing the latest in extrusion welder technology - for plastic welding membranes during land lining

Extruder welder features :

- Integral air supply
- Dual temperature controls
- Safety cut out - prevents cold start of the extruder
- Complete with 1 welding shoe + 4 air nozzles
- CE approved

Extrusion welder technical specification :

- 230v
- Extrusion welding max output : 5.8kg / hour using 5mm welding rod
- Extrusion Welding min output : 3.8kg / hour using 4mm welding rod
- Welding material : PP / PE
- Plastic welding rod : 4mm / 5mm
- Extrusion welding range : 12mm - 40mm
- Weight : 10.9kgs
- Length : 70cm
- Heating capacity - hot air : 2300W
- Heating capacity - band heater 800w

The BPWE Munsch MAK 58 D extrusion welder incorporates dual temperature and electronic speed controls

Designed for use in an industrial environment it is the extruder of choice for land lining and welding plastic membranes and geo-textiles

Please call or email for further information on this extrusion welder for :

- **Purchasing**
- **A live demonstration**

Details

Product Code: BPWE MAK 58D

Kaivan korkeus vesijuoksusta maanpintaan

800

500

Valurautakanasto
- koneistetut vaalinpinnat

PE-säätöputki de

Telekaappiringas
- pultattava
- tiivisteillä

Wahoite-kalvoputki De

Valattu pohjaosa
- virtausurilla

poisto

juoto

Viemärin tarkastuskaivot - Waho VTK-T

Kanaisto

400/315 umpi ritädi

560/315 40tn 25tn

560/500 muovihattu RST-hattu

Kaivan korkeus, liittymät, lisävarusteet ja telekaappittomat KAIVOKORTIN mukaan.

OK

Oikeus muutoksiin pidättäisin

Kunta/Kylä	Kaupunki	Kaupunki	Viemärin tarkastuskaivojen tarkastus	
Käyttötarkoitus			Tyyppi	Järjestys
Käyttötarkoitus			Tyyppi	Järjestys
			Käyttökäyttö	Tarkastus
			Tyyppi	Järjestys
			Tyyppi	Järjestys
			Tyyppi	Järjestys
			Alkuperäinen	Tarkastus
			03.02.2003	Tarkastus