

GUIDANCE BOOKLET

FOR PARENTS OF CHILDREN IN ILLENPIHA DAY CARE

Created by:

Liina Paulasaari

Laurea University of Applied Sciences Bachelor's Thesis

in cooperation with Illenpiha Day Care Center

Table of Contents

Welcome to Illenpiha Day Care	2
<i>i. Brief introduction</i>	2
Floor Plan	3
Schedule	4
<i>i. Patruunat</i>	4
<i>ii. Kisällit, Lukkarit, & Timpermannit</i>	5
Essentials for Day Care	6
<i>i. Please note</i>	6
<i>ii. What to dress your child in</i>	7
Useful links	9
<i>i. Materials in Finnish</i>	9
<i>ii. Materials in English</i>	9

Welcome to Illenpiha Day Care

i. Brief introduction

Illenpiha Day Care Center (Illenpiha 6, 01520 Vantaa) is a public day care center, catered to care for 0-6 year-old children, located in the heart of Kartanonkoski. The day care is made up of two buildings with a shared play ground area. Illenpuisto Day Care Center and the Open Day Care of Pakkala also belong to the same unit and all are directed by Sari Eskola (09 83925090 / sari.eskola@vantaa.fi).

Groups:

Main Building

Patruunat (0-3 year old's group)

043 827 0253 pk.illenpiha.patruunat@vantaa.fi

Kisällit (3-5 year old's group)

050 303 2900 pk.illenpiha.kisallit@vantaa.fi

Timpermannit (3-5 year old's group)

050 303 3169 pk.illenpiha.timpermannit@vantaa.fi

Lukkarit (part-day day care group)

043 827 0254 pk.illenpiha.lukkarit@vantaa.fi

Hoitoapupalvelu *Lukkarit (child care assistance)

043 827 0254 lukkarit.illenpiha@vantaa.fi

Illenpolku Building (kindergarten)

Keltaiset keltainen.illenpiha@eduvantaa.fi

043 826 1971

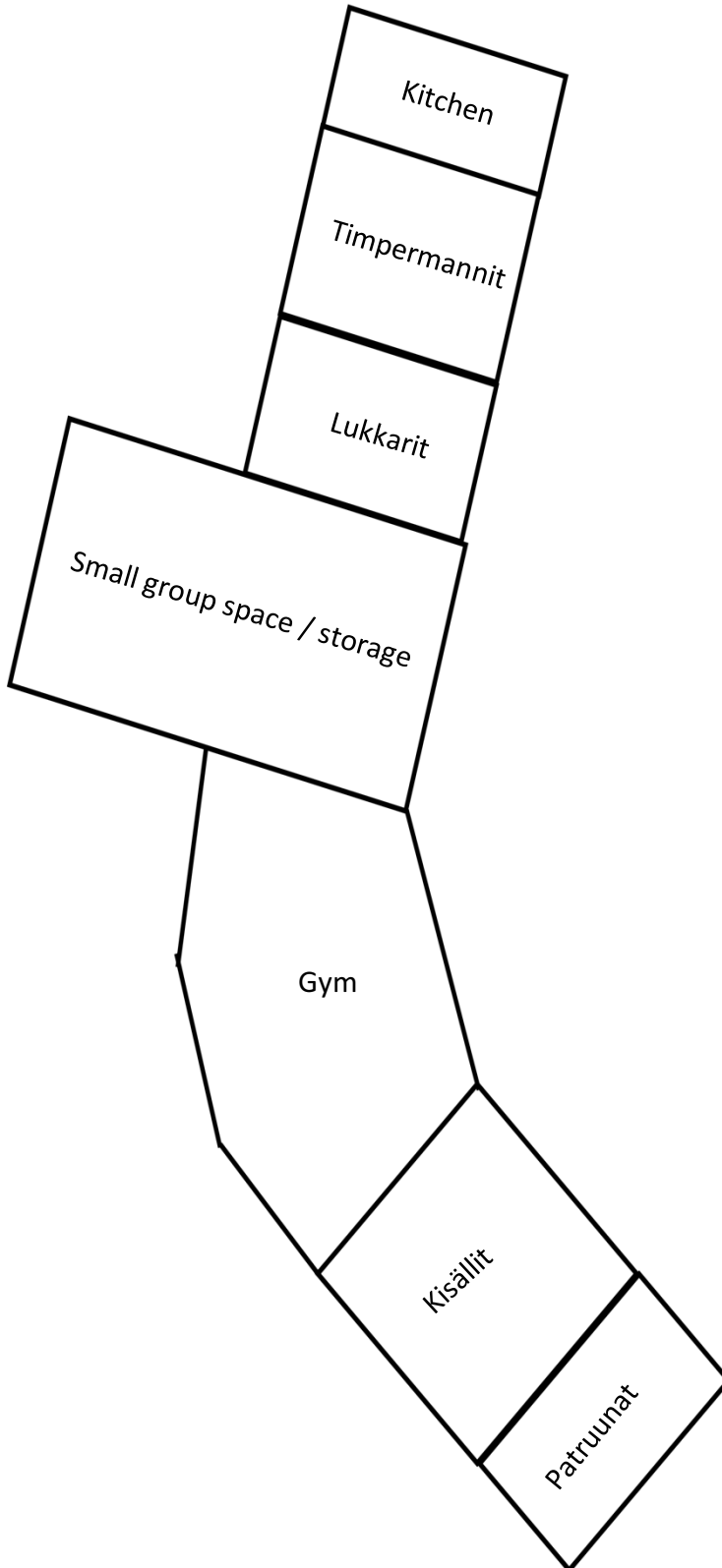
Vihreät vihrea.illenpiha@eduvantaa.fi

043 826 9172

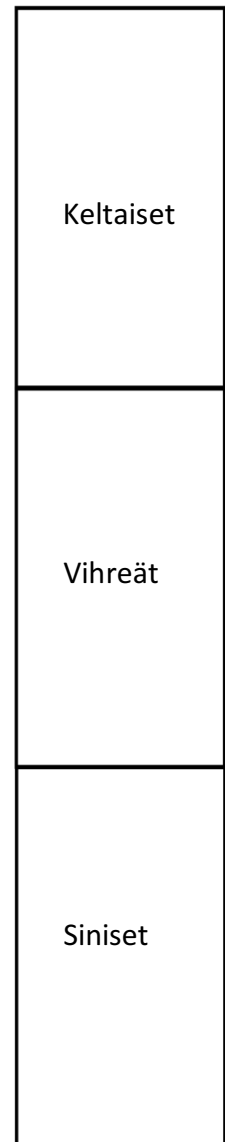
Siniset sininen.illenpiha@eduvantaa.fi

Floor Plan

Illempiha Building



Illempolku Building



Schedule

i. Patruunat

Time	Activity
8.15-8.45	Breakfast
9.00-10.30	Planned activities (Play/Outdoor activities/Small group activities)
10.45-11.00	Circle time
11.00-11.45	Lunch
12.00-14.00	Nap time
14.00-14.30	Snack
14.30-15.30	Play time
15.30-17.00	Outdoor play

Time	Activity
8.15-8.45	Breakfast
9.00-11.00	Planned activities (Play/Outdoor activities/Small group activities)
11.00-12.00	Lunch
12.00-13.00	Nap time
13.00-14.00	Play time
14.00-14.30	Snack
14.30-15.30	Play time
15.30-17.00	Outdoor play

Essentials for Day Care

i. Please note

Your child will spend a significant amount of their day at day care. To ensure your child's happiness and wellbeing, Illempiha day care expects you to provide necessary items, which make your child's daily life at day care comfortable. Items that should be kept at day care at all times include the following:

Rain Clothes

Rain coat



Rain pants

Wellies

Rain mittens

Other

Indoor slippers

Bag

Family picture

Water bottle

Xylitol pastilles

If 3 years old or under / if needed

Spare diapers

Baby comforter / Sleep toy

Binkie and bottle

Spare Clothes

2 Tops

2 Bottoms

1 Pair of socks / Tights

2 Pairs of underwear

Seasonal

Winter

Spare hat

Spare gloves

Summer

Sun screen

Please remember to write your child's name on each of their belongings (clothing, toys, etc.), as they might get lost!

ii. What to dress your child in

< +20 dress child in and bring to day care:

- T-shirt or a thin long-sleeved shirt
- Pants or shorts
- Socks
- Sneakers or sandals
- Cap
- Sunglasses

< +10 dress child in and bring to day care:

- Shirt
- Pants
- Socks
- Thin jacket & thin outdoor pants
- Hat or cap
- Sneakers
- Thin mittens or gloves

> +10 dress child in and bring to day care:

- Shirt
- Pants
- Socks or tights
- Jacket & outdoor pants or outdoor overalls
- Beanie
- Mittens or gloves
- Neck warmer
- Boots or thick shoes

0~ -10 dress child in and bring to day care:

- Shirt
- Pants
- Socks or tights
- Wool socks
- Fleece/wool jumper & pants or suit
- Thick winter jacket & outdoor pants or winter overalls
- Beanie
- Thin mittens & mittens or gloves
- Neck warmer & scarf
- Boots or thick shoes

**Incase the bitterness by frost is -10 °C or more, we DO NOT go outdoors with children under the age of 3.*

**Incase the bitterness by frost is -15 °C or more, we DO NOT go outside with children in day care.*

Useful links

i. Materials in Finnish

Vantaa's homepage for [Illenpiha day care](#)

Illenpiha day care's [description of operations](#) (2017-2018)

Picture guidebook for parents ([starting at day care](#))

The Early Childhood Education [Plan](#) of Vantaa (2017)

Basic information about the individual early childhood education [plan](#)

In-depth information on the individual early childhood education plan ([Finnish National Agency for Education](#))

The [model form](#) of the individual early childhood education plan (Finnish National Agency for Education)

ii. Materials in English

Basic information on the individual early childhood education [plan](#)

The [model form](#) of the individual early childhood education plan (Finnish National Agency for Education)

How the individual early childhood education plan is [created](#) (Finnish National Agency for Education)

